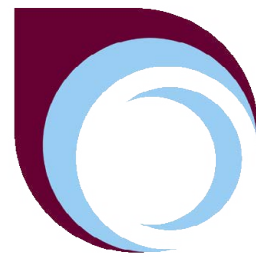


CONTENTS

3	MEKELLAN NAIDOO TROPHY
4	PRINCIPAL'S MESSAGE
5	GENERAL INFORMATION
6	GENERAL INFORMATION
7	ENTERTAINMENT BOOKS
8	CAREERS
9	MR SEQUEIRA'S TRIP TO ISRAEL
10	MR SEQUEIRA'S TRIP TO ISRAEL
11	GEOGRAPHY DEPARTMENT
12	GEOGRAPHY DEPARTMENT
13	BLAKE WHANAU
14	COLLEGE SPORTS
15	COLLEGE SPORTS
16	COLLEGE SPORTS
17	KEY DATES



BOTANY DOWNS
Secondary College

575 Chapel Road, Howick, Auckland
Telephone: 273 2310
Fax: 2738551
www.bdsc.school.nz

Important contact numbers for
reporting out of hours incidents
Senior Caretaker: 027 361 7319
Business Manager: 027 293 5701



MEKELLAN NAIDOO TROPHY

Botany Downs Secondary College is honoured to accept the Mekellan Naidoo trophy for First XI Player of the Year presented by the Naidoo family to the school on Wednesday 1 March. Mekellan's love for "the beautiful game" will always be remembered. His contributions to football over his time at Botany will serve as a fitting legacy of his passion and dedication.



PRINCIPAL'S MESSAGE

Dear parents and caregivers,

Learning is well underway at Botany Downs Secondary College and there are many exciting events on in the weeks ahead. A great Athletics day was held recently and congratulations to all the students who broke school records and to the following students who hold the individual all round winners for their age group:

Junior Boy – Erza Bond 9S10

Junior Girl – Jessica Williams 9K6

Intermediate Boy – Daniel Parkes 11K6

Intermediate Girl – Jeannie Hill 12K6

Senior Boy – Aaron Mouat 13K6

Senior Girl – Rachel Kilgour 13K6

With results like that it was no wonder that KORU was the winning Whanau on the day. Congratulations, those precious points will be going towards the Whanau Shield Competition.

Congratulations also to our graduates of 2016 who have been awarded scholarships. We gained 38 Scholarships in total; 37 Scholarships and one Outstanding Scholarship. Special congratulations go to Aman Sethi, (Year 12 in 2016) who gained an Outstanding Scholarship in Calculus. Thanks go to the many teachers across the range of subjects in which Scholarships were gained last year. A date during the University mid-year semester break will be confirmed for our annual scholarship event for students, parents, staff and board.

'Texter's Neck' is the position your neck is in when you are looking down at your phone. Flexing your head forward for long periods of time can cause cervical spinal degeneration which will affect your posture. A person's posture does not only affect the body but also affects the brain.

Terry Small (a master teacher and learning skills specialist) writes that the way a person sits, stands and walks has big implications on a person's mood and happiness.

The latest studies show:

- The way you move affects the way others see you.
- When you sit up straight, you are more likely to think of positive things, or recall good memories.
- A slow, slumped walk can drain your energy.
- Your posture can even affect your decision making.

We know there are billions of mobile phones in the works and that texting has become a preferred form of communication. Think of all the time the average person spends hunched over a smartphone, or device. Now think of all the time you see your son or daughter on their phone. Hour after hour. Day after day. Is this your child?

'Texter's Neck' can cause neck strain, neck pain, and headaches. Small states that 'When you bend your neck and look down at your phone for a long time you are straining the muscles and joints in your neck. This is unnatural, and it can cause poor posture which can be permanent.

We need to encourage our young people (and there is a lesson for us also) to try and cut back on the time they spend on their devices. And when using them, remind them to keep their head up. Their brain and body will thank you.

Karen Brinsden
Principal

(Parts of this have been taken from an article written by Terry Small, "Teachers Matter")



GENERAL INFORMATION

GUIDANCE WEBPAGE AND ONLINE REFERRAL SYSTEM

Tēnā koutou katoa,
Greetings to you from the Guidance team for 2017.

We are pleased to inform all Parents, Caregivers and Students that we have a new [Guidance and Counselling webpage](#). Please take the time to view this important information outlining Guidance and Counselling within our school including our location, contact information, description of service, and other useful support links for young people. Please take the time to view our Guidance and Counselling page either by clicking on the hyperlink or through the Student or Parent sections of our website.

In addition, we have created a new online referral system. The links to both [Caregiver](#) and [Student](#) referral forms can also be found on our webpage. This means you can connect with us at any time and from anywhere. Referral forms go directly to the Head of Guidance Mr. Iain Thomson and all information is kept completely secure.

Finally, from March for 2017 the Guidance team will include Miss Lily Palmer who is currently a postgraduate Counselling student at the University of Auckland. She will support the running of the Travellers Programme for 2017 as well as providing one to one support to our students.

Ngā mihi

Iain Thomson
Head of Guidance / Counsellor
All communications are confidential.

MUSIC DEPARTMENT

Itinerant Music Lessons:

There are still vacancies in this programme in the following instruments: Trumpet, French Horn, Cello, Double Bass, Flute, Clarinet, Saxophone and Violin/viola. If you would like your child to learn one of these instruments, please contact l.treneman@bdsc.school.nz.

If you no longer wish your child to participate in this programme, please send a note indicating this change. Students will receive their personal timetable this week. This will also be their pass in and out of class.

Opportunities Outside the College:

Chamber Music Contest: Entries are now open for the Auckland Chamber Music Contest. A composition section is also available. Please check the website for the conditions of entry and online entry form.
<http://www.chambermusic.co.nz/nzct-chamber-music-contest-2017>

BDSC MEGACREW FUNDRAISER

FRIDAY, 31ST MARCH

BDSC MEGACREW PRESENTS

MOVIE

Disney
BEAUTY AND THE BEAST

NIGHT

TICKETS AT \$20 WITH FREE POPCORN OR ICE CREAM. FOR TICKET PURCHASES, PLEASE TALK TO ANY MEMBER OF THE BDSC MEGACREW. FOR MORE INFORMATION, PLEASE SEE MR SEQUEIRA

DOORS OPEN AT 8:00PM

MONTEREY CINEMA

CINEMA
Good Only Date Sold
ADMIT ONE
048107

PosterMyW... 4/2 FENCIBLE DRIVE, HOWICK AKL 2014

GENERAL INFORMATION

HOST FAMILY APPEAL

Have you ever considered hosting an International Student from Europe, South America or Asia? We are looking for families to become homestay providers to our International Students. We need families for 1 term, 2 terms and full year periods.

Families need to be available and willing to spend time with their students and show them around Auckland. English must be your first language and your culture in terms of food and lifestyle needs to be Kiwi or very similar to the Kiwi culture. Families are reimbursed \$260 per week.

Please email homestay@bdsc.school.nz to request an information pack.



JUNIOR DEBATING

BDSC1 Junior Open debating team won their first debate of the opening round against a St Kents team, arguing against the moot that 'this house would make studying Te Reo compulsory in all schools'.

From left: Nuoya Huang 10E2, Jessica Haworth 10J5 and Anna Twyman 10B7



AUCKLAND TRANSPORT

School students can save over \$100 a term on travel with an AT HOP card.

AT HOP is a reusable prepay smart card for travel on trains, ferries and buses around Auckland. Students can save \$100 a term by loading a Child fare concession on their AT HOP card. To apply, parents need to buy and register an AT HOP card for their child. Children under 5 years of age travel free when accompanied by a fare paying passenger. For more information visit our [website](#).

Supersave
\$100 a term
 on school travel
 with AT HOP[®]
 AGE 5-19 YEARS

ENTERTAINMENT BOOKS

We're excited about the arrival of the brand NEW 2017 / 2018 Entertainment Books, as well as the Entertainment Digital Memberships that put all of the value of the Book on your phone. To celebrate, we're giving you the chance to not only receive your new Membership hot off the press come April, but also be rewarded for doing so!



Order your new Entertainment Book before 31 March 2017 and you'll receive six printed Early Bird Offers or order an Entertainment Digital Membership and your Early Bird Offers will be loaded straight to your phone that you can use right away - a nice little taster of what is to come!

Purchase your Entertainment Membership from Botany Downs College again to support their fundraising efforts.

ORDER NOW

The brand NEW 2017 / 2018 Entertainment Memberships are packed with loads of your favourite offers, along with stacks of new businesses that we know you're going to love! Not only are you getting an amazing Book or Digital Membership, you're also helping your favourite charity or community group raise much needed funds for their cause!



CAREERS

WORK SYMPOSIUM

On Monday 27 February Mrs Drum, Career Advisor and 20 BDSC students and their parents attended the Work Symposium at Waipuna Convention Centre from 6.45 – 9.00pm.

This was a free, one-off evening presented by the Pakuranga Rotary Club designed to “greatly lift students’ personal chances of securing entry level employment when they hit the job market.”

The evening began with an introduction from Ken Holmes the past president of Pakuranga Rotary about what employment means. A panel of outstanding speakers who provided insight and advice regarding a range of employment sectors followed this. Kim Campbell addressed the employer’s perspective and John Pennington discussed working in the world of digital technology. Next up was Anna Morris from Fletcher Construction, followed by Anna Morris who discussed the hospitality industry and finally Val Reilly, the president of the Career Development Association of NZ and Astrid Van Holten, Senior Advisor for Careers NZ gave a dual presentation on how to move from education to work. Ken returned to the stage to facilitate questions and provide a conclusion.

It was a great evening with much to offer students and their parents and we would like to thank The Rotary Club of Pakuranga for providing such an opportunity.

University of Otago OCE 2017



On Campus Experience

What is the OCE?

The On Campus Experience (OCE) is a fully funded, all expenses paid, scholarship that provides an amazing opportunity for senior secondary students of Māori descent to sample living and learning at the University of Otago.

The students will explore the Otago campus, and the student city of Dunedin. They will have the opportunity to attend lectures in their areas of interest, as well as meet academic staff and students. They will also experience life in a residential college and meet staff at the Māori Centre, who provide great support for Māori students when they come to Otago.

For further enquiries, please contact:

Grace Latimer | Māori Liaison Officer | Email: auckland.liaison@otago.ac.nz

Applications can be downloaded from:

otago.ac.nz/prospectivestudents/maori/

University of Otago

On Campus Experience Scholarship

Sunday 7th - Thursday 11th May.

Completed applications must be received at the University of Otago Auckland Centre by 5.00pm Thursday 6th April 2017.

Applications will be accepted via post or email auckland.liaison@otago.ac.nz OR posted to the current address on the form.

Address:

University of Otago House | Level 4
385 Queen Street | Auckland 1141
Email: auckland.liaison@otago.ac.nz

ONLY
OTAGO

MR SEQUEIRA'S TRIP TO ISRAEL

Last year I applied and was accepted as one of 26 teachers on a seminar for educators in Israel. The seminar entailed teaching and learning about the Holocaust and the implications of prejudice. This was run by the International School for Holocaust studies at Yad Vashem located on picturesque Mount Herzl. This opportunity was one that I will remember for years to come as it brought together my passion for travel, people and History. The seminars were emotionally heavy and covered a range of topics from "How was it humanly possible to commit acts of Genocide" to "Jewish culture, history and religion".

We also had the opportunity to meet with three Holocaust survivors namely: Daniel Gold, Yuhudith Kleinman and Rina Quint. Another survivor was Eva Rac Levi who was a Schindler survivor. What I am left with was Rena's response to my question, which was "How did you find redemption after the Holocaust" to which she replied, "You can either move on and live a full and good life or you could let the hate consume you". Listening to these amazing stories of resilience and triumph in the face of adversity were inspirational.

The Yad Vashem centre is a fantastic source of Holocaust History and Jewish culture. There are memorials around the campus along with an awesome Audio-Visual Library, Art Gallery and Museum that chronologically and thematically documents Jewish experiences during the Holocaust. Through our seminar, we were provided with wonderful opportunities to travel around Jerusalem and other parts of Israel. Going through the pictures, it has been difficult to pick out favourite moments, as every moment spent there was special. Being a History geek, I enjoyed visiting sites like Qumran, which was the site of the discovery of the Dead Sea Scrolls, Masada,

the Crusader castle at Belvoir, the Sea of Galilee, the Dead Sea, the Jordan River, the Kibbutz on the Israeli-Jordan border and places in Jerusalem like Jaffa Gate and the Mahuda Yehuda markets. This trip was also a culinary feast as we got to experience the delicacies of Israel, which include Halva, Shwarma, Kebabs and Baklava. We also travelled to Tel Aviv, which is a lively city with fabulous street art, shopping and cafes. More interesting than that was visiting Independence



The Dome of the Rock and the Wailing Wall



The most inspirational people I have met

MR SEQUEIRA'S TRIP TO ISRAEL



Eva Rae Levi and Myself at Schindler's grave

Hall previously known as the Dizengoff House where we were given a brief yet detailed presentation on the Creation of the State of Israel.

The new experiences and the conversations I've had with fellow teachers has sparked off ideas that I intend to bring into the classroom especially at Year 10 in our study of the Holocaust and Year 12 in our depth study of the Weimar Republic and Nazi Germany.

I consider History to be a story, a sad story, a love story, a story of redemption, a triumph story and more importantly a human story. My trip to Israel has encompassed all these aspects and I hope I become a better storyteller and teacher because of it.

Mr. Stephen Sequeira.
Social Sciences Teacher.



Church of the Holy Sepulchre (Supposed Site of Jesus's crucifixion)



The Wailing Wall



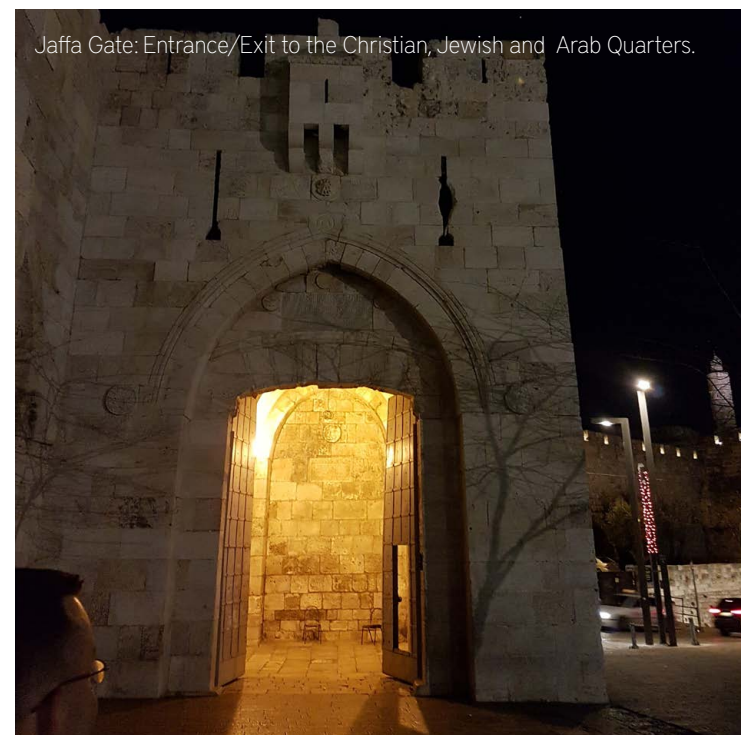
A stunning view of Mount Herzl from Yad Vashem



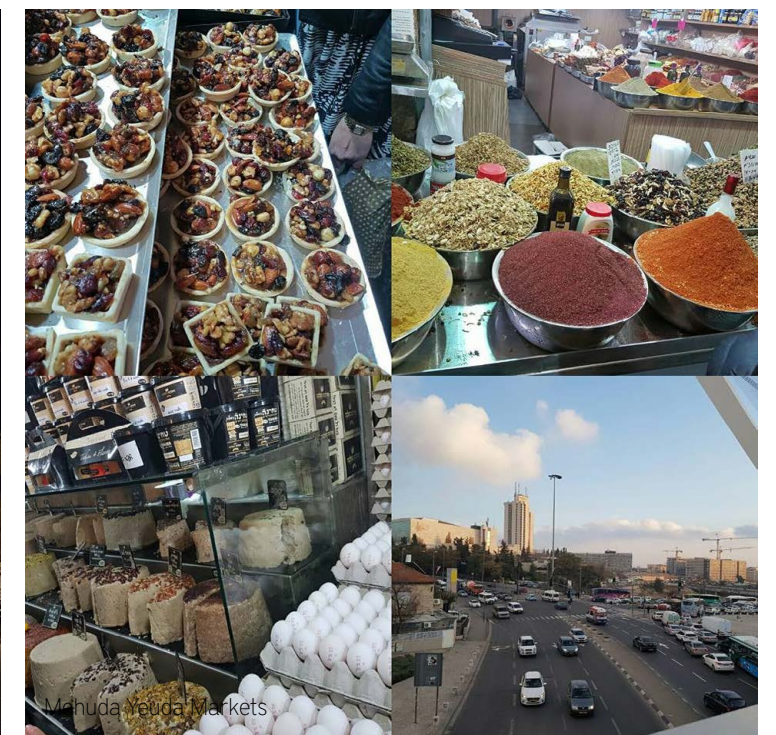
(Independence Hall: State of Israel was declared in this room)



Via Dolorosa



Jaffa Gate: Entrance/Exit to the Christian, Jewish and Arab Quarters.



Mahuda Ve'eda Markets

GEOGRAPHY DEPARTMENT

VOLCANOES GEOGRAPHY TRIP

The Level 1 Geography classes went on a field trip to some of the volcanoes on the Auckland isthmus to see different volcanic features formed when these eruptions occurred. We also looked at which processes caused these features to be formed. This linked to what we are currently learning about in class.

One of the main volcanoes we visited was Mt Mangere as it had great examples of lava bombs, a tholoid plug and a breached crater. The lava bombs ranged from 10cm in diameter to 2m in diameter and were very impressive examples of the power of a volcano, given that they were all thrown out by the force of an eruption. The breached crater and tholoid plugs showed us how different types of lava with different viscosities can produce different features through similar processes.

We saw pahoehoe lava from the eruption of Mt Mangere at Kiwi Esplanade. This lava cooled to form a ropy appearance because it has a lower viscosity than a'a lava and therefore flows faster and forms these formations.

We also visited Mt Wellington and looked at the way that this volcano was located in relation to other volcanoes in Auckland. At Fisher Parade we saw ignimbrite: material that was produced when an extremely large volcano erupted to form what is known today as Lake Taupo. Some of this material settled in Auckland to form large layers of a chalky white rock that are up to 6m thick in some areas.

We all learnt lots on this field trip about how volcanoes are formed, how volcanic features are formed and what impact these volcanic processes have on the surrounding land, all of which will be useful for our present internal assessment.

by Olivia Kieser 11D9

RANGITOTO ISLAND GEOGRAPHY TRIP

On Tuesday 14th February, the Year 11 Geography classes went on a journey to one of the most well-known volcanoes in New Zealand; Rangitoto Island. This iconic volcanic island is located northwest of the Auckland Ferry Terminal on the Waitemata Harbour and is visible from most parts of the city. Our task was to observe and gather data for our Geography internal assessment, which consisted of explaining the formation of surface features that have been caused by volcanic eruptions.

We gathered at school at 7:15 am and took the bus to the Auckland Ferry Terminal where we boarded Fuller's Ferry. The weather wasn't exactly the best as low clouds were looming above our heads with drizzle forecast for some of the day. It drizzled all day. Despite the unfavourable weather, we still managed to get down to work and made the most of our trip. On the ferry, many of us managed to pop out onto the deck where we could see the Auckland city skyline gradually fading away into a cloud of mist. Not too long after, we reached our destination and the ferry docked at the Rangitoto wharf. Disembarkation was quick and soon after, we were all assembled in a sheltered area waiting for work to begin. To ensure each and every student could make the most of the trip and for ease of management, the teachers divided us into four different groups lead by Miss Brodie, our Head of Geography Department, Mrs Rawlings, Mrs Muir and Mrs Bottom. Each group departed in a different direction to various areas and worked their way around the island.

Our group, led by Miss Brodie, went straight into action. We started investigating and discovering the many volcanic features scattered around Rangitoto - a shield volcano. One of the more interesting observations during the trip was learning about a'a lava. We were able to feel the jagged and rough texture of the lava surfaces which were full of visible tiny holes called vesicles. Vesicles were formed when gas bubbles escaped from the

hot molten lava. Since there was little soil on Rangitoto, plant life started when moss and lichen died, and when a'a lava decomposed, it eventually formed humus which enabled plants to grow. From our observations, we noted that pohutukawa trees were the dominant species of plants on the island.

Making our way to the summit, we collected further data about the lava flow, lava caves and vegetation stratification on the island. The drizzly weather did not dampen our spirits as most of the students were talking and laughing with each step closer to the top, hoping to have a great view of the surrounding once reaching the pinnacle.

Upon arriving at the summit, we were greeted with the most spectacular sight of the day. Fog! We hardly could see anything. Only a few shrubs and bushes around the summit could be seen. It was quite a disappointment but that is the nature and beauty of a field trip. Always presenting the unexpected.

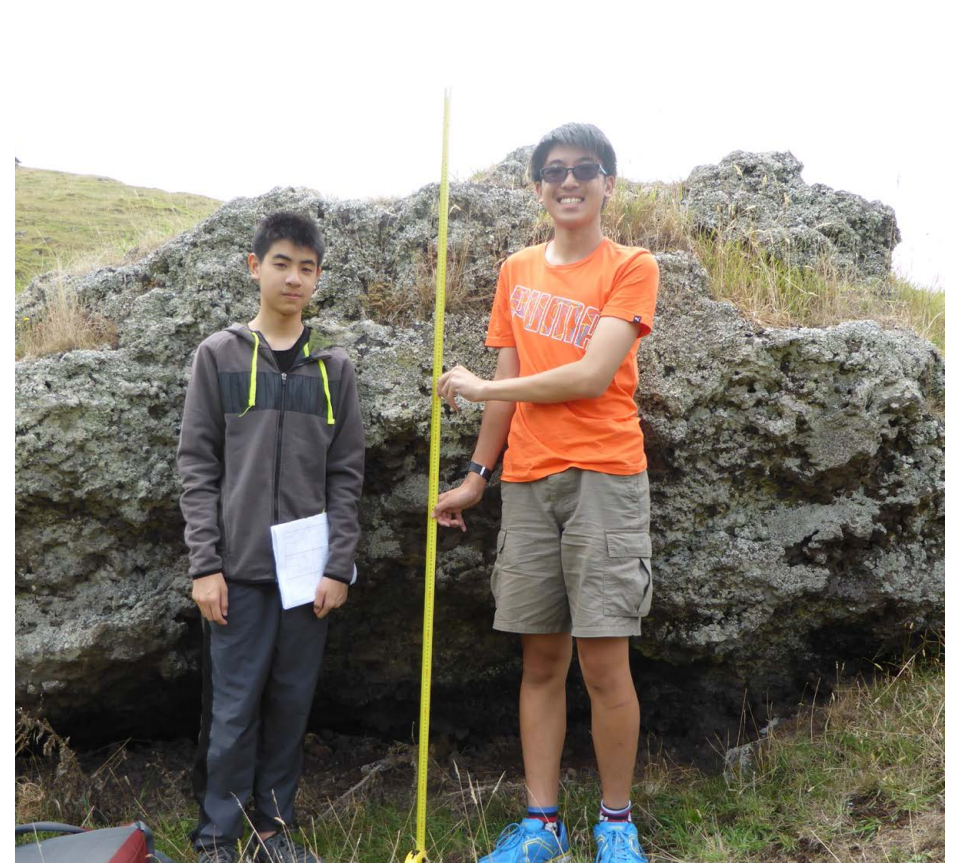
On the way down from the summit, the weather started to clear up and we were able to see the immense body of water, the Waitemata Harbour, that stretched out for miles, hugging Rangitoto Island. With our clothes drenched and our aching legs we walked towards the jetty and bid farewell to this beautiful volcanic island.

A huge thank you to Miss Brodie, Mrs Rawlings, Mrs Bottom and Mrs Muir for making this trip enjoyable and educational. We have benefitted a lot from this and learned heaps about the volcanic features and hopefully, this will translate into a good grade in our coming internals. Thank you.

by Wei-Xuen Chan 11D3

Photos on next page

GEOGRAPHY DEPARTMENT



BLAKE WHANAU

I couldn't be more pleased with the start of the year we have had in Blake. The timetable process went smoothly and it is good to see that students are thinking about the prerequisite system during the year and understanding their performance dictates whether they can take subjects the following year.

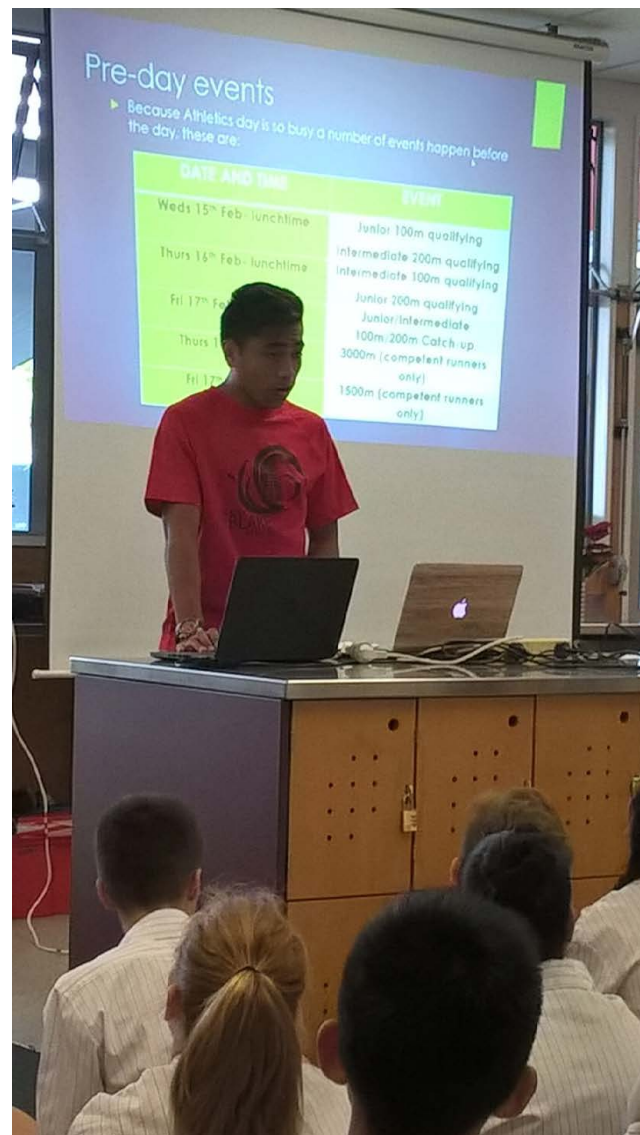
The Year 9 classes have transitioned well and I am grateful to the work of the tutors who have worked so hard to make this process as smooth as possible. The Lead Students also gave up some of their summer holiday to work with both the Year 9 and 10 orientation process. It is great to see all our Year 9 students attending camp as this is such an important part their orientation.

Our Lead Student team are determined that this is going to be a terrific year and they have worked tirelessly in the first few weeks. We met last week for a pot luck dinner which reflected the diversity of the group with a delicious spread from all corners of the world. They ran their first assembly from start to finish and it was a highly polished performance with a visual message to back up every message and standard they wished to communicate.

Currently they are working on Year 9 camp, setting up their service committees, arranging a lunch for all students new to Blake in order to help this group settle in as well and a Year 13 trip to watch the Blues vs Highlanders at Eden Park on March 11th

Blake has always performed well in the athletic sports, swimming sports and cross country and there is a real buzz in the whanau this year about these events.

Alan Taylor
Whanau Leader



COLLEGE SPORTS

NETBALL TRIAL DATES

Trial dates for all 2017 Netball teams are below; please ensure if you wish to trial you register at the sports office.

DATE	TIME	LEVEL	LOCATION
Mon 27 Feb	5:00-6:30pm	Premier/Sen A/Sen B Trial 1 (Y11-13 only)	School Gym
Wed 1 Mar	3:30-5:00pm	Year 10 Trial 1	School Courts
Mon 13 Mar	3:30-5:00pm	Year 9 Trial 1	School Courts
Wed 15 Mar	3:30-5:00pm	Premier/Sen A/Sen B call-backs and identified Year 9/10 Trial 2	School Gym
Fri 17 Mar	3:30-5:00pm	Premier/Sen A/Sen B Trial 3 (If required)	School Gym
Mon 20 Mar	3:30-5:00pm	Year 10 Final Trial	School Courts
Wed 22 Mar	3:30-5:00pm	Year 9 Final Trial	School Courts
Mon 27 Mar	3:30-5:00pm	Senior C Down Trial 1	School Courts
Wed 29 Mar	3:30-5:00pm	Senior C Down Trial 2	School Courts
Fri 31 Mar	3:30-5:00pm	Senior C Down Trial 3	School Courts

CRICKET

We have had a good start to the season with our 1st XI, 2nd XI, 3rd XI and Junior Boys and our 1st XI Girls all playing their first games this week. The commitment and enthusiasm has been great and we look forward to this continuing throughout the season. The 1st and 2nd XI boys started in early January, their dedication to trainings and games has been outstanding. The teams have set high standards for other sports codes to follow and encourage other teams to display the same teamwork and positivity.

BDSC 1st XI cricket is boldly going where no BDSC cricket team has gone before. Playing matches on grass wickets with a white ball in the 1A Grade Limited overs championship. This means we have to play our home matches away at the Howick and Pakuranga Club grounds at Lloyd Elsmore Park. Our first match this season was at Liston College on 4 Feb and we found out the hard way what it is like to play against an established senior team. We were soundly beaten. To be fair, batting first on that wicket may not have been the wisest decision? I have been impressed with the team's fabulous commitment and attitude, cutting short their Christmas holidays to start training two weeks before the start of

school, and playing two practice matches, one against a visiting Australian school. Attendance at training has been 100%, and the young side have been enthusiastic, jovial and have reciprocated their commitment with a positive start to the season. The team have set high standards for other sports code to follow and encourage other teams to display the same teamwork, positivity and dedication. The leadership shown by Armani Wright (captain), Yatin (vice-captain) and Arjun Thakur (senior player) have been influential, positive and inspiring. After the drubbing given to us by Liston, heads might have dropped, but the positive attitude meant onwards and upwards, regroup, do some hard training and see if the team could bounce back, and bounce back it did. Our second match was against Kristin College at Lloyd Elsmore. Again we won the toss, but decided to field first. We batted well, having them 48 for 4, but alas we let them off the hook, and they managed a total of 196 all out off their allotted 50 overs. We changed our opening pair to Rihan Sayed (11D3) and Sukhdev Sukh (11E8), and this worked. 62 runs were on the board before Yatin was out for 20. Sukhdev proved to be a superb choice for opener, as he scored 71, with a good selection of aggressive but sensible batting. Ruben was next highest score with a rapid 40, and we managed to knock off the runs with nearly 6 overs to spare. Kristin College's coach and scorer commented: "an enjoyable game".

Thanks must go to the players for their enthusiasm and hard work, and to the coaches Ross Rahman and Tharindu Dassanayake, the latter given the boys an extra training session back at school, straight after their loss against Liston. We have also been helped with advice and encouragement from former students Hastin Ramadeen (ex-captain) and Munir Sayed. Munir also umpired for part of the match against Kristin College.



Munir Sayed, class of 2016, (crouched in front of Ross Rahman) gives the team a pep-talk between innings while coach Ross Rahman and former captain Hastin Ramadeen (far left) and the team listen.



BDSC 1st XI Cricket team 11 Feb 2017 at the Howick and Pakuranga Cricket Club grounds at Lloyd Elsmore Park:

Back row: Ruben Van der Merwe 12K12; Sukhdev Sukh 11E8; Hari Narasimhan 12J5; Harry Toflau 11J5; Armani Wright (captain) 13S4; Parasjot Sandhu 13K12; Christian James 12K12

Front row: Yatin Vijan (vice-captain) 12J5; Arjun Thakur 13S4; Sumeet Kumar 11K12; Rihan Sayed 11D3

COLLEGE SPORTS

NEW ZEALAND TOUCH NATIONALS

On the weekend, Friday 10 February to Sunday 12 February BDSC had 10 students representing the Auckland region in various grades at the New Zealand Junior Touch Nationals. Eliza Hay (12S4), Caitlin Nauer (11J5) and Briannah Fleming (10J5) were all members of the Auckland U16 girls' team who were in an extremely competitive grade. The team did extremely well and finished in 3rd place. Taylor Kennard (12D3), Corne Ludick (13S4) and Lantze Davids (12D3) were members of the Auckland U18 Mixed team who narrowly missed out on a semi-final and ended up in 7th place in a large and competitive grade. Tommie Wiid (13K12), Nathan Clark (13D9), Alijah George (12J11) and Tremain Falanitama (13B1) were members of the Auckland U18 Boys Development team who finished in 11th place. Having so many BDSC students playing at a regional level at the New Zealand nationals for touch is a great achievement and is great for the development and future of the sport at BDSC.



Caitlin Nauer (11J5)



Taylor Kennard (12D3)



Eliza Hay (12S4)



Alijah George (12J11)



Lantze Davids (12D3)



Nathan Clark (13D9)



Corne Ludick (13S4)



Tommie Wiid (13K12)



Tremain Falanitama (13B1)

COLLEGE SPORTS

ORIENTEERING

The first Orienteering event of the year was held at Botany Downs Secondary College on Tuesday 14 February. The event welcomed many schools from East Auckland and BDSC had a huge 65 participant's take part in the event.

All students from BDSC performed extremely well, with many making it into the top 10 for their age group. A mention for Sophie Skelton (13K6) who finished 1st in the Senior Girls age division 2 minutes ahead of the 2nd place competitor.

The students who finished in the top 10 for their age group were:

Senior Girls:

- 1st place: Sophie Skelton (13K6)
- 6th place: Mollie Keaney (12D9)
- 9th place: Charlotte Leigh (12E2)

Intermediate Boys:

- 6th place: Shiangbo Chang (10B7)
- 9th place: Sam Biddick (11J11)

Intermediate Girls:

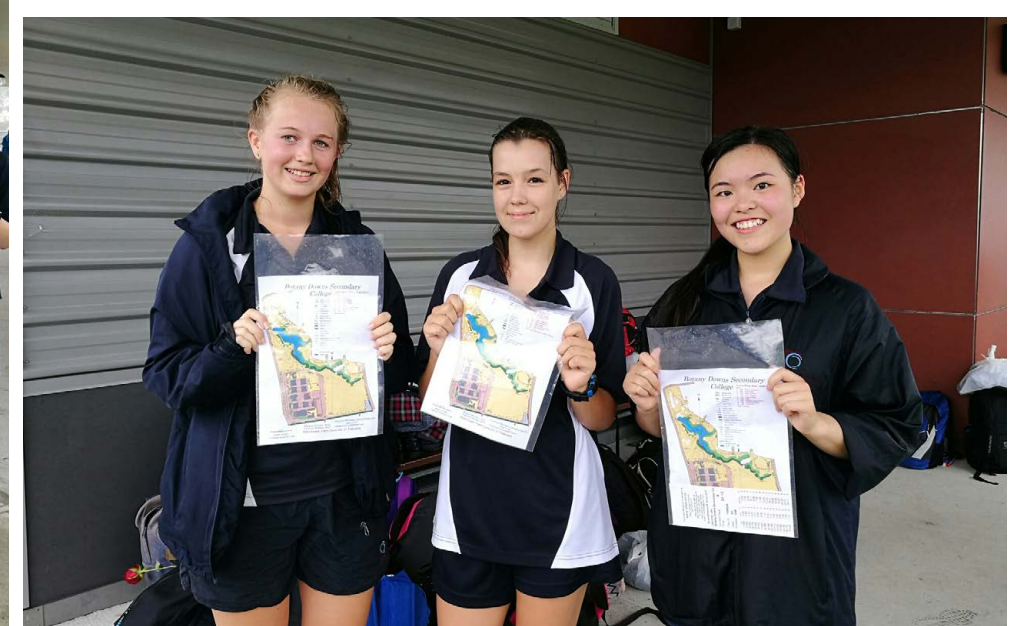
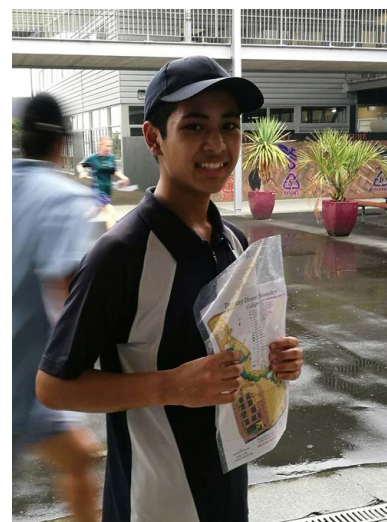
- 6th place: Anna Twyman (10B7)
- 9th place: Ella Keaney (10B7)
- 10th place: Jessica Haworth (10J5)

Junior Boys:

- 8th place: Hank Lin (9S10)

Junior Girls:

- 2nd place: Briar Keaney (9D3)
- 3rd place: Morgan McFarlane (9E2)
- 4th place: Brooklyn Shannon (9J5)
- 6th place: Gladys Huynh (9E2)
- 9th place: Sarah Sami (9D9)
- 10th place: Breanna Garcia (9D9)



KEY DATES 2017

Thursday 16 March	Swimming Sports
Thursday 13 April	Term 1 Ends
Friday 14 April	Good Friday
Monday 17 April	Easter Monday
Tuesday 18 April	Easter Tuesday (Education Sector Public Holiday)
Tuesday 25 April	Anzac Day
Monday 1 May	Term 2 Starts
Monday 5 June	Queen's Birthday
Friday 7 July	Term 2 Ends
Monday 24 July	Term 3 Starts
Friday 29 September	Term 3 Ends
Monday 16 October	Term 4 Starts
Monday 23 October	Labour Day
Thursday 14 December	Term 4 Ends (approx date tbc)