

OPTION SELECTION INFORMATION 2027



BOTANY DOWNS
Secondary College



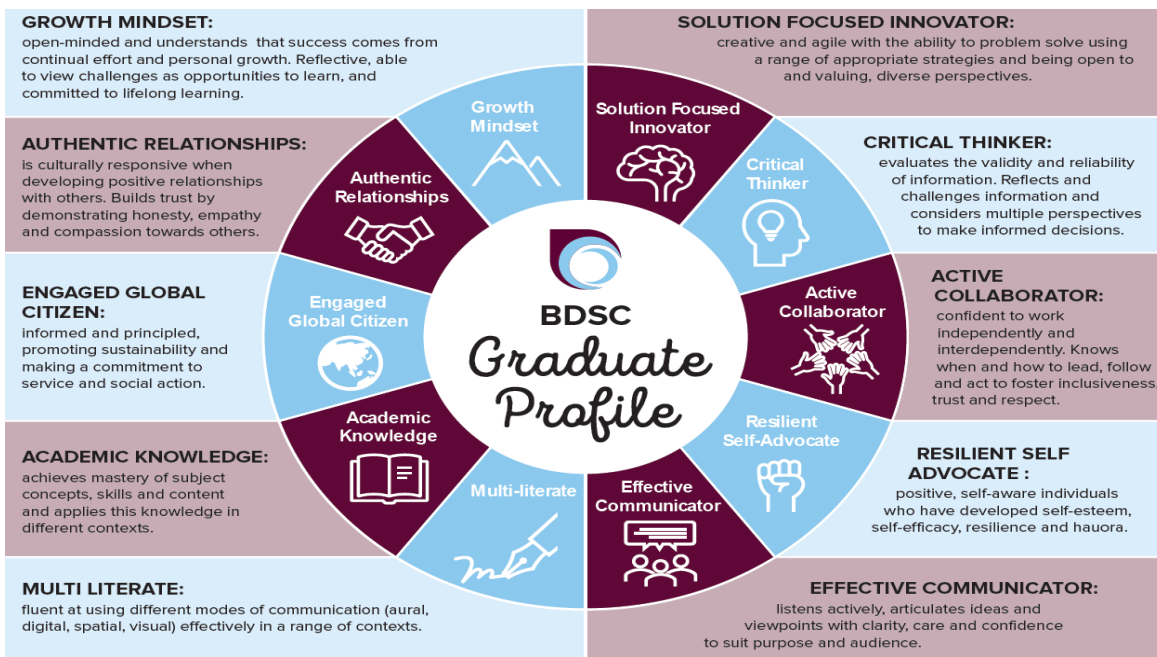
CONTENTS

3	Introduction
4	School Contacts
5	Planning your Course
6	General Option Information
7	Year Level Option Information
9	National Certificate of Educational Achievement (NCEA)
10	Year 11 BDSC Diploma Overview
11	NCEA Credit Overview – Level 2 and Level 3
	Literacy and Numeracy
12	New Zealand Scholarship
13	NCEA Standards Overview
14	Entrance to Tertiary Education
15	University Entrance Literacy – Level 2
16	University Entrance Literacy – Level 3
17	NCEA Level 3 Approved Subject List
18	University Entrance Information
20	Recommended Subjects
21	BDSC Course Codes
23	Planning Page
24	English Learning Area Flowchart
25	Health and Physical Education Learning Area Flowchart
26	Languages Learning Area Flowchart
27	Mathematics Learning Area Flowchart
28	Sciences Learning Area Flowchart
29	Social Sciences Learning Area Flowchart
30	Technology Learning Area Flowchart
31	Visual And Performing Arts Learning Area Flowchart

INTRODUCTION

This course selection booklet contains key information on the option selection process and programmes of study available at Botany Downs Secondary College in 2027 for students going into Years 10-13. Your choice of courses will determine our school timetable structure and enable us to plan for resources and staffing.

Your college years are a time for exploring ideas and possibilities and finding out more about yourself. Your choice of courses will be influenced by your **interests**, **abilities**, and **possible career path**. Think about the subjects you choose as an overall programme of study, rather than as individual courses. Ask yourself - How will my programme of study will shape me as a learner? How will it prepare me for the future? Courses have value in the development of both specific and generic skills, not just knowledge content. Our BDSC Graduate Profile outlines the skills we want ākonga to develop alongside academic qualifications.



Regardless of your year level, as a student of BDSC, you must be prepared to work hard and tackle the requirements of the rigorous, advanced courses on offer. In return the school guarantees that we will give the best teaching, guidance, and support to help all students achieve the highest level of success possible.

Many students have not yet decided on a specific career path so it is important that you research the careers and vocational pathways that may interest you and discuss with or get advice from the Careers Advisor, your teachers, and your whānau.

Take time to familiarise yourself with the information in this booklet and read the course pages in the option booklet for your year level carefully. We hope that this process will start you thinking about the avenues open to you. If you need more information, please talk to your tutor teacher, or refer to the contact list on page 4 of this booklet.

The option selection process will commence on **Monday 20 July (Term 3 Week 1)**. We ask that students have completed their course selection in the BDSC web portal by **Monday 27 July (Term 3 Week 2)**. There will be an opportunity for students to make changes to their selected course later in the year if required. If not enough students select a particular course, it may not be offered next year, or it may be combined with another level.

SCHOOL CONTACTS

SENIOR LEADERSHIP TEAM

Principal	<i>Mrs Brinsden</i>
Associate Principal	<i>Mrs Holmes</i>
Deputy Principal	<i>Mrs McGregor</i>
Deputy Principal	<i>Mr Whipp</i>
Deputy Principal	<i>Mrs Beazley</i>
Deputy Principal	<i>Ms Pinnell</i>
Deputy Principal	<i>Dr Narain</i>

HEADS OF LEARNING AREAS

English	<i>Ms Servanin</i>	e.servanin@bdsc.school.nz
Health and Physical Education	<i>Mr Saville</i>	j.saville@bdsc.school.nz
Languages	<i>Miss Lodge</i>	m.lodge@bdsc.school.nz
Mathematics and Statistics	<i>Mrs Bennet</i>	i.bennet@bdsc.school.nz
Science	<i>Mr Kumar</i>	l.kumar@bdsc.school.nz
Social Sciences	<i>Miss Douglas</i>	k.douglas@bdsc.school.nz
Technology	<i>Mr Achary</i>	d.achary@bdsc.school.nz
Visual and Performing Arts	<i>Dance - Mrs McKenna</i>	l.mckenna@bdsc.school.nz
	<i>Drama (Acting) - Mrs Hey</i>	c.hey@bdsc.school.nz
	<i>Music - Miss Treneman</i>	l.treneman@bdsc.school.nz
	<i>Visual Art - Miss Clapperton</i>	t.clapperton@bdsc.school.nz

WHĀNAU LEADERS & ASSISTANT WHĀNAU LEADERS

Blake Whānau	<i>Mr Taylor & Ms Byrne</i>	a.taylor@bdsc.school.nz , l.byrne@bdsc.school.nz
Britten Whānau	<i>Mrs Bhandari & Mr Hough</i>	h.bhandari@bdsc.school.nz , m.hough@bdsc.school.nz
Britten Whānau	<i>Ms Folks & Mr Lowe</i>	n.folks@bdsc.school.nz , j.lowe@bdsc.school.nz
Endeavour Whānau	<i>Mrs Herbert & Mrs Bottom</i>	f.herbert@bdsc.school.nz , d.bottom@bdsc.school.nz
Koru Whānau	<i>Mr Euden & Mrs Kaur</i>	b.euden@bdsc.school.nz , g.kaur@bdsc.school.nz
Spirit Whānau	<i>Mrs Killip & Mrs Murphy</i>	m.killip@bdsc.school.nz , r.murphy@bdsc.school.nz

CAREER DEPARTMENT

Careers Advisors	<i>Mrs Muir</i>	a.muir@bdsc.school.nz
	<i>Ms Williams</i>	c.williams@bdsc.school.nz
	<i>Mrs Smith</i>	n.smith@bdsc.school.nz
Gateway	<i>Mrs El-Yassir</i>	e.el-yassir@bdsc.school.nz

PLANNING YOUR COURSE

This option information booklet provides senior students and parents/guardians with information about the option process. Students have a wide range of options to choose from, and **it is critical that decisions about option choices are made carefully**. It becomes increasingly difficult for students to change academic direction as they progress further into secondary school and tertiary institutions. Students should endeavour to follow a **broad-based general course** of study for as long as possible. Early specialisation is not recommended.

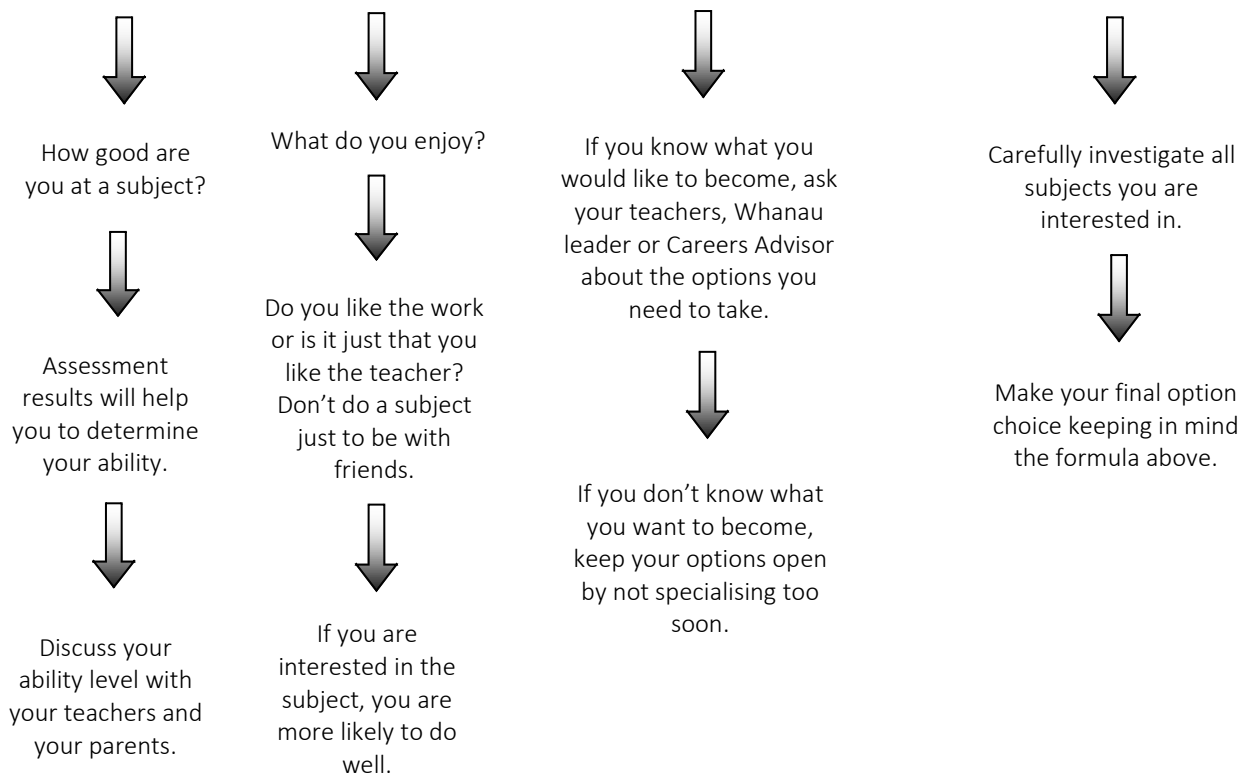
As you plan your course and choose your options check:

- The level at which each subject stops
- The **prerequisites and co-requisites** for entry to each subject
- The number of credits generated by each subject
- The proportion of internal and external assessment in each subject
- Whether the subject offers **Achievement Standards** or **Unit Standards** or a combination
- Level 3 only – whether or not the subject is on the University approved list of subjects (see page 17)
- What subjects, credits, grades are required for entry to the University or Technical institute course you are interested in
- The total subject course costs, including the cost of fieldwork
- That this subject equips you with skills, content, and understandings you need to enter a certain career path
- That you have sufficient flexibility to change your course design if your career goals change

To make good decisions you need the right information. Discuss your subject choices with your family, teachers, Whanau Leader and Careers Advisor. **Think carefully, consult widely, and choose wisely.**

All course contribution amounts are estimated.

ABILITY + INTEREST + AMBITION = OPTION CHOICE



GENERAL OPTION INFORMATION

1. **Students must make their option choices during Week 1 of Term 3. Option selection must be completed online by Monday 27 July (Week 2).** Late selection of options may mean that students will not receive their first choice of options.
2. Individual course descriptors can be found in the accompanying year level Option Books.
3. All listed subjects will run depending on the number of applicants and availability of staff and facilities (in practical subjects). Entry to some courses will be limited. **Entry to all courses will be through meeting of the listed prerequisites or at the discretion of the appropriate Head of Learning Area.** Although every effort will be made to provide the subjects chosen, no guarantee can be given that **all** will be possible. Because of the need to have classes of a certain size, some students may be asked to change options. If not enough students choose a particular option, it may be cancelled.
4. Choosing a subject does **NOT** commit the student to taking it in following year.
5. If students require guidance, they should seek this as soon as possible from the following people:

Careers Advisor	Heads of Department / Learning Area
Subject teacher	Whanau Tutor / Mentor
6. Course contributions listed for each subject include resources, activities and trips that are **highly recommended** as being conducive to optimal student learning. Please refer to each individual course descriptor in the accompanying year level Option Books for the compulsory items required for that course.
7. Year 11-13 students who haven't yet gained literacy and/or numeracy will sit the Literacy and Numeracy co-requisite package. All learners must achieve the Literacy and Numeracy package to be awarded their NCEA qualification at any level. This consists of reading and writing unit standards worth 5 literacy credits each, and a numeracy standard worth 10 credits (total of 20 credits). Many learners may achieve the 20 credits in Year 10, but for others, it may be in Year 11 or beyond. Please follow the link to see the full list of **current** NCEA Level 1 standards that contribute towards literacy and numeracy [2024-27AlternativeLitNumStandards.xlsx](#). More information can be found on page 12 of this Option Information book.
8. For students in Years 9 & 10 in 2027, there are more NCEA changes on the horizon. We will update all stakeholders on what these changes look like once we have confirmation. For the most up-to-date information on upcoming curriculum and assessment changes go to the Ministry of Education's website [New Zealand Curriculum Home](#)
9. The final selection of standards per subject will be made by the HOLA from the standards presented in the individual year level option books.
10. Level 2 courses that lead to University Entrance Approved subjects in Level 3, and Level 3 courses which are University Entrance Approved subjects have been identified in the individual year level option Books. Students intending to go to University after Level 3 should ensure that most of their subjects at Level 3 are University Entrance Approved Subjects.

YEAR LEVEL OPTION INFORMATION

YEAR 10:

1. There are **FIVE** compulsory subjects in Year 9.

These subjects are:

English
Mathematics
Health and Physical Education
Science
Social Studies

2. Students are required to choose **THREE** option subjects for Year 10. Individual course descriptors are in the accompanying Year 10 Option Booklet. Year 10 option subjects are **full year** courses.
3. Please note: Year 10 Outdoor Education is **limited to two classes only**. Students must select 10OED in the web portal and submit a signed, dated application to Ms Patel (Head of OED) by the Option Selection deadline. Applications must briefly explain why they want to take the course and understand that being able to swim, ride a bike, and stay at camps overnight is a prerequisite. Final selection will be made in consultation with HPE staff.
4. **Year 10 course restrictions:**
 - Cannot take both 10DRT (Digital Art) and 10ART (Visual Art)
 - Cannot take both 10OED (Outdoor Education) and 10PED (Physical Education)
 - May only take a maximum of one from 10TEM, 10FDN and/or 10TEF

YEAR 11:

1. There are **FOUR** of the compulsory subjects in Year 11.

These subjects are:

English
Mathematics
Science (students can select which course they would like to take—
1SCB (Chemistry/Biology) or 1SCP (Physics/Earth & Space Science)*
Active Wellbeing

***NOTE:** Students can take both Year 11 Science courses, if they wish to; in that case, they would select just two additional option subjects

2. Students are required to choose **THREE** option subjects for Year 11. Individual course descriptors are in the accompanying Year 11 Option Booklet.
3. **Year 11 course restrictions:**
 - Cannot choose both 1CBA and 1CBE
 - Cannot choose both 1ART and 1DRT
 - Can only do 1 maximum of 1TEM, 1FDN or 1TEF
 - Can only do 2 maximum of 1HED, 1OED, 1PED

YEAR 12:

1. There is **ONE** compulsory subject in Year 12.

That subject is: **English**

Students will be placed in the English course that best suits their learning needs. Details of the different Year 12 English courses can be found in the accompanying Year 12 Option booklet.

2. Students are required to choose **FIVE** option subjects for Year 12. Individual course descriptors are in the accompanying Year 12 Option Booklet.

3. **Year 12 course restrictions:**

- Cannot choose both 2FAH and 2TEF
- Can only do 1 max of 2ESS, 2BSS and 2TEM
- Can only do 1 max of 2TEM, 2FDN and 2TEF
- Can only do 2 maximum of 2PHO, 2DES and 2ART (and be wary of a 3rd high internal subject)

YEAR 13:

1. There are **no** compulsory subjects in Year 13.

2. Students are required to choose **FIVE** option subjects for Year 13. Individual course descriptors are in the accompanying Year 13 Option Booklet.

3. **Year 13 course restrictions:**

- Cannot choose both 3FAH and 3TEF
- Can only do 1 maximum of 3TEM, 3FDN and 3TEF
- Can only do 2 maximum of 3PHO, 3DES and 3ART (and be wary of a 3rd high internal subject)
- Cannot choose 3MAT with either 3MAC, 3SAP or 3SPA

NATIONAL CERTIFICATE OF ED ACHIEVEMENT (NCEA)

NCEA is the national qualification for senior secondary school students in New Zealand. Individual subjects are subdivided into Achievement Standards some of which are assessed internally and some externally through NZQA national examinations. Each standard clearly identifies what a student must do to achieve the standard.

Students will complete courses at each level of the National Qualifications Framework and will be assessed on the learning attained in each course. Each assessment generates credits that contribute to a certificate at Level 1, 2 or 3 of the National Qualification Framework.

These credits are achieved through: -

- INTERNALLY ASSESSED ACHIEVEMENT STANDARDS: These Achievement Standards are assessed as part of the learning programme e.g., research assignments, portfolios, practical work, tests.
- EXTERNALLY ASSESSED ACHIEVEMENT STANDARDS: These Achievement Standards assess knowledge and skills through a national external examination.

There are four different levels of Achievement for **Achievement Standards:**

NOT ACHIEVED (N OR NA): Students have not met the required standard.

ACHIEVED (A): Students have met the required standard.

MERIT (M): Students have achieved the standard with Merit.

EXCELLENCE (E): Students have achieved the standard with Excellence.

- UNIT STANDARDS: These are internally assessed standards that are assessed at the school during the year as learning takes place and can also contribute credits to the NCEA.

For most subjects there are two different levels of achievement for **Unit Standards:**

NOT ACHIEVED (N OR NA): Students have not met the required standard.

ACHIEVED (A): Students have met the required standard.

REPORTING NOT ACHIEVED

Not Achieved results are reported on the results notice for both internally and externally assessed standards.

SUPPLEMENTARY COURSES DEVELOPED BY EXTERNAL PROVIDERS:

These are courses that students can complete alongside their selected subjects e.g., Gateway. These courses can also contribute credits to the NCEA.

ENDORSEMENT OF CERTIFICATES

All successful students are awarded NCEA at the end of each year's study (Level 2, and Level 3). These results show that a student has achieved the required number of credits at a particular level (including specified literacy and numeracy requirements at Level 1). Each standard carries a specific number of credits which count towards the qualification.

To encourage students to do their best, those who gain sufficient credits at Merit (50 credits at Merit or above) or Excellence (50 credits at Excellence level) will have this recognised on their qualification*, for example a student can receive an NCEA Level 2 certificate with Merit or an NCEA Level 2 certificate with Excellence. In 2025:

- of 33,645 candidates gaining NCEA Level 1, 27.1% gained endorsement with Merit, and 10.2% gained endorsement with Excellence.
- of 47,432 candidates gaining NCEA Level 2, 25.3% gained endorsement with Merit, and 15.3% gained endorsement with Excellence.
- of 38,972 candidates gaining NCEA Level 3, 26.5% gained endorsement with Merit and 14.6% gained endorsement with Excellence.

* Credit values for different types of endorsement have historically been adjusted by NZQA to compensate students for disruption caused to learning by COVID school closures, rostering home, home isolation etc.

COURSE ENDORSEMENT

Students can gain further recognition for their achievements by gaining Merit or Excellence endorsement in individual courses. Students will receive an Excellence endorsement if they gain 14 or more credits* at Excellence level, while students gaining 14 or more credits at Merit (or Merit and Excellence) will gain a Merit endorsement. For Course Endorsement, at least 3 of the 14 credits must be from internally assessed standards, and 3 from external assessment (national examinations), to demonstrate students are competent in both forms of assessment.

This endorsement will be recorded on the student's Result Notice.

YEAR 11 BDSC DIPLOMA OVERVIEW

All Level 1 students at Botany Downs Secondary College will take **seven** subjects. Four of these are **compulsory** (Maths, English, Science, and Active Well-Being) and three are optional. To be awarded NCEA students must achieve the required literacy and numeracy co-requisites. These are discussed more fully on page 12.

- NCEA has changed substantially following sector feedback, and advice from the Ministry of Education, NZQA and the NCEA Professional Advisory Group (PAG), For further information please refer to: <https://ncea.education.govt.nz/what-ncea-change-programme>
- At BDSC we have made changes to our L1 NCEA programme to coincide with national changes to NCEA. Level 1 NCEA is not an exit qualification for most students at BDSC. In 2023 we moved away from offering a full NCEA Level 1 programme of 18-22 credits per subject. Our Level 1 courses provide rich learning that focuses on development of knowledge, skills, and capabilities. By reducing the number of assessments, students sit through the year, our focus will be on teaching and learning rather than credit collection.
- There are effectively two main types of courses at Level 1
 - (1) the majority of courses offer two NCEA internal or external assessment (worth credits) and two school-based assessments that **do not award** NCEA credits
 - (2) Vocational Pathway subjects doing a range of unit standard-based assessments (worth credits) e.g., Trade Skills, Food and Hospitality. These courses offer a number of standards that will generate credits.
- A typical Year 11 programme will typically comprise 7 courses. English, Mathematics, Science, and Active Well Being are compulsory for all students. Students will choose an additional 3 courses from those on offer. Each course will typically generate 5-10 credits. Most Year 11 students could therefore expect to gain 30-60 credits in their Year 11 programme.
- Year 11 students will be eligible for the BDSC Year 11 Diploma. The BDSC Diploma will acknowledge a student's academic achievements throughout the year. It will reflect the level of achievement attained in NCEA and school-based assessments across subjects. To gain a Botany Downs Secondary College Year 11 Diploma, a student needs to meet each of the following criteria:
 - Literacy and Numeracy co-requisite package,
 - Attendance Rate (90%),
 - Academic Pass Rate (70%) – Achieved or better in NCEA standard, D4 or better in school-based assessments

Year 11 Assessment Codes

When looking at course pages in the option booklet, take note of the assessments offered – these will be listed at the bottom of each course page.

- Assessments starting with A or AS (e.g. AS92025) are NCEA Achievement Standards. These assessments will be graded as Not Achieved, Achieved, Merit, or Excellence. These assessments can be used toward NCEA endorsements
- Assessments starting with U or US (e.g. U20137) are NCEA Unit Standards. These assessments will be graded as Not Achieved or Achieved. These assessments cannot be used towards NCEA endorsements
- Assessments starting with the subject course code (e.g. 1FDN08) are BDSC school-based assessments. These are graded on a 12-point scale:
 - Beginning = B1, B2, B3
 - Developing = D4, D5, D6
 - Consolidating = C7, C8, C9
 - Excelling = E10, E11, E12

LEVEL 2 & 3 NCEA OVERVIEW

LEVEL 2:

All Level 2 students at Botany Downs Secondary College will take **six** subjects. English is **compulsory** but the remaining five subjects are optional. Each subject generates between 15-25 possible credits. Students will therefore have the opportunity to achieve a minimum of 90 credits. Some subjects have Unit Standards. These generate credits towards the qualification, but they generally do not gain Merit or Excellence grades.

ACHIEVING LEVEL 2 NCEA: To be awarded NCEA Level 2 students **must achieve 60 credits at Level 2** or above. They must also gain the **literacy and numeracy** requirements which sit alongside the NCEA qualification. The quality of the National Certificate for each student will depend on the total number of credits gained and the grades achieved.

LEVEL 3:

All Level 3 students at Botany Downs Secondary College will take **five** subjects. There are **no compulsory subjects** at Level 3. Each subject generates between 15-25 possible credits. Students will therefore have the opportunity to achieve a minimum of 75 credits. Some subjects have Unit Standards. These generate credits towards the qualification, but they do not gain Merit or Excellence grades.

ACHIEVING LEVEL 3 NCEA: To be awarded NCEA Level 3 students **must achieve 60 credits at Level 3** or above. They must also gain the **literacy and numeracy** requirements which sit alongside the NCEA qualification. The quality of the National Certificate for each student will depend on the total number of credits gained and the grades achieved.

There is a great deal of additional information available from the NZQA website: www.nzqa.govt.nz

LITERACY AND NUMERACY

To gain NCEA Levels 1-3 a student must reach a certain level of proficiency in literacy and numeracy.

The new literacy corequisite package consists of three Common Assessment Activities (CAA): one reading and one writing standard, worth 5 credits each, and one numeracy standard worth 10 credits. Many learners may achieve literacy and numeracy in Year 10, but for others, it may be in Year 11 or beyond. These 20 credits are a corequisite and sit alongside the NCEA 60 credits.

The new Literacy and Numeracy co-requisite package became mandatory in 2024. All learners must achieve Literacy and Numeracy to be awarded their NCEA qualification at any level. As part of a transition period, the government has announced that for 2024-2027, it is permitting students to gain literacy and numeracy through the corequisite standards OR through a small group of (mainly English and Mathematics) Level 1-3 standards (see link below).

The majority of Year 10 students at BDSC will be expected to sit the literacy (reading and writing) and numeracy corequisite standard Common Assessment Activities (CAA) in Year 10. These are online exams run in May and September each year. Year 11-13 students will have the option to sit the corequisite literacy and numeracy standards (CAA) if they have not yet achieved them by the end of Year 10.

Please follow the link to see the full list of NCEA Level 1 standards that contribute towards literacy and numeracy - [2024-27AlternativeLitNumStandards.xlsx](#). **Please note that if these standards are used to gain literacy or numeracy, they cannot also be used to contribute credits to an NCEA qualification.**

The New Zealand Qualifications Authority have provided a lot of information on their website about the new NCEA qualification and associated literacy and numeracy requirements. Please follow the following link to access this material – [Understanding how NCEA Requirements are Changing](#).

Information identifying which NZQA standards that can contribute to the 10 Numeracy credits and 10 Literacy credits required to achieve NCEA Level 1. On each course's individual page, a column labelled "CODES" contains either N or L which identifies standards that can contribute to the 10 Numeracy credits and 10 Literacy credits required.

NEW ZEALAND SCHOLARSHIP

Scholarship is an external assessment for top secondary students. Scholarship examines course material related to Level 3 standards derived from up to Level 8 of the New Zealand Curriculum that students study in Year 13. It does not attract credits nor contribute towards a qualification but the fact that a student has gained a Scholarship appears on the Record of Achievement. Scholarship assessments are demanding and require students to demonstrate high-level critical thinking and analytical skills, a comprehensive understanding of key content, skills, and ideas as well as advanced written language skills. About 3 per cent of Year 13 students studying each subject at Level 3 will get Scholarship, if they reach the standard that has been set.

Each Scholarship assessment carries two passing grades – Scholarship (S) and Outstanding Scholarship (O).

Successful Scholarship students gain substantial monetary awards. A Scholarship in one subject receives \$500, as a single payment. All the other awards result in payments spanning three years of successful tertiary study. These awards are outlined in the following table.

SINGLE SUBJECT AWARDS	<ul style="list-style-type: none">• For candidates who get Scholarship in one or two subjects.• A 'one-off' award of \$500 per subject (maximum payment \$1000).
TOP SUBJECT SCHOLAR AWARD	<ul style="list-style-type: none">• For the top candidate in each one of the Scholarship subjects.• \$2,000 each year for up to three years as long as candidates maintain a 'B' grade average in tertiary study.
SCHOLARSHIP AWARD	<ul style="list-style-type: none">• For candidates who get Scholarship in three or more subjects.• \$2,000 each year for up to three years as long as candidates maintain a 'B' grade average in tertiary study.
OUTSTANDING SCHOLAR AWARD	<ul style="list-style-type: none">• For the next 40-60 top candidates. The minimum eligibility requirement to be considered for this award is three Scholarships with at least two at "Outstanding" level or more than three Scholarships with at least one at "Outstanding". The number of recipients for this award is restricted and achieving the minimum requirement will not guarantee an award.• \$5,000 each year for three years as long as candidates maintain a 'B' grade average in tertiary study.
PREMIER AWARD	<ul style="list-style-type: none">• For the very top 7 to 12 candidates. The minimum eligibility requirement to be considered for this award is at least three Scholarships at "Outstanding" level. The number of recipients for this award is restricted and achieving the minimum requirement will not guarantee an award.• \$10,000 each year for up to three years as long as candidates maintain at least a 'B' grade average in tertiary study.

To be eligible for the top awards a student must attain Scholarship in three subjects in the same year. There are no NCEA examination fees for domestic students. International students will continue to pay the full fee \$383.30 (GST incl.) per year to access NCEA and \$102.20 (GST incl.) per Scholarship subject. (www.nzqa.govt.nz)

The New Zealand Qualifications Authority has collated useful resources to support Scholarship candidates including past examination papers and exemplars. These can be accessed through the individual subject pages on the NZQA web site.

Teachers in each subject area will endeavour to offer support to Scholarship students. This could take the form of providing supplementary resources, such as additional reading and study materials, as well as tutorials outside class time. The onus however remains on the student to complete the necessary work to prepare them effectively for this level of assessment. A final commitment to the Scholarship assessment is not required till the entry deadline in Term 3. Scholarship subjects supported at Botany Downs Secondary College include English, French, Japanese, Biology, Chemistry, Physics, Science, Statistics and Modelling, Mathematics with Calculus, Accounting, Art History, Drama, Media Studies, Music Studies, Visual Arts (Painting, Photography and Design), Economics, Geography, History, Classical Studies, Physical Education and Health Education, Technology and Design and Visual Communication. Prospective Scholarship students will either be invited to join Scholarship subject tutorials or students will be invited to give an expression of their interest during Term 2 of the school year.

In 2020 two BDSC students gained a 'Premier Award'. In 2024 one student gained an 'Outstanding Scholar Award' and in 2025 two BDSC students were awarded an 'Outstanding Scholar Award.' These awards are highly prestigious and provide significant academic and financial benefits.

NCEA STANDARDS OVERVIEW

All Level 1, 2 and 3 students will be assessed against National Qualification Framework Achievement Standards or Unit Standards. NOTE: Year 11 students will also sit BDSC school-based assessments.

Each NCEA standard can be worth as little as 2 credits, and much as 14 credits – the number of credits is usually a reflection of the time and effort needed to meet the assessment criteria. At Year 11, all courses will offer 5-10 NCEA credits. Most subjects at Levels 2 and 3 will offer courses of 18 – 21 possible credits. The accompanying year level Option Books contains a list of the **possible** Achievement Standards and Unit Standards and their credit values, which could make up each course next year. **The final choice of Standards for each course is at the discretion of each individual Head of Learning Area.** The standards selected will be published in each senior subject course outlines and issued to all students at the start of the new academic year.

For each subject studied there will be a list of Standards provided to the students in the course outline:

For example: This is possible list of standards for Level 2 LATIN (note: Latin is not done at BDSC)

*An Achievement Standard will start with AS.
A Unit Standard will start with US.*

*Some assessment is based on work completed and assessed at school (**Internal**) and some assessed by a national examination (**External**).*

If the standard is achieved, a student earns credits. The total number of credits available in each subject varies.

NCEA Internal Achievement Standards/Unit Standards					
Number	Subject Reference	Title	Internal/ External	Credits	CODES
AS91196	Latin 2.3	Interpret studied Latin literary text(s)	Internal	6	L
AS91197	Latin 2.4	Interpret a Roman viewpoint	Internal	4	W
NCEA External Achievement Standards					
AS91194	Latin 2.1	Translate adapted Latin text of medium complexity into English, demonstrating understanding	External	6	
AS91195	Latin 2.2	Interpret adapted Latin text of medium complexity, demonstrating understanding	External	5	
Possible credits available				21 credits	

*Students will be assessed on what they achieve in their work during the year in these modules. The level of achievement needed to gain credit in each module is called its **Achievement Standard**.*

Standards that contribute to Level 1 Literacy and Numeracy are indicated by (L) = Literacy; (N) = Numeracy.

Level 2 & 3 Standards that contribute to UE literacy requirements are indicated by (R) = Reading; (W) = Writing.

ENTRY TO TERTIARY EDUCATION

Tertiary Education providers in New Zealand require certain entry criteria to be met before students are enrolled for a course. **This option booklet provides a general guideline, but students must check the specific course entry criteria for the tertiary institution they wish to attend.** The Careers Advisor has a detailed list of prerequisites for entry to courses run by tertiary providers in New Zealand.

COMMON ENTRANCE STANDARD REQUIREMENTS FOR UNIVERSITY:

University Entrance (UE) is the minimum requirement to go to a New Zealand university. **To enter university**, you need:

- **NCEA Level 3** = 60 credits at Level 3 or above
- **Three approved** subjects
 - 14 credits per approved subject at Level 3
- **UE Literacy** - 10 credits at Level 2 or above, made up of:
 - 5 credits in reading
 - 5 credits in writing
- **Numeracy** - 10 credits at Level 1 or above, made up of:
 - Co-requisite standards or 10 credits from a small range of specified new achievement standards

Students wishing to attend University are strongly encouraged to take courses that offer achievement standards as Merit and Excellence grades will be used to rank and differentiate applicants for entry to some Tertiary courses.

THE UNIVERSITY OF AUCKLAND

All applicants must gain the Common Entrance Standard outline above and, in addition:

- All applicants will get a Rank Score from their best 80 credits at Level 3 or higher over a maximum of five approved subjects from the approved subjects list (see following pages for list of approved subjects). These are weighted by the level of achievement. If you achieve less than 80 credits, the rank score will be based on your total Level 3 credits gained over a maximum of five approved subjects.
- NB: Some courses also have special entry requirements e.g., BE(Hons), BGlobalSt and BNurs require specific subjects at Level 3 NCEA.

To meet the Rank Score for University of Auckland students should be doing 5 University Approved subjects

It is important that you check the University web site for up-to-date information and the latest changes. Information about University of Auckland admission for secondary school students can be accessed at:

<https://www.auckland.ac.nz/en/study/applications-and-admissions/entry-requirements/undergraduate-entry-requirements.html>

Academic English Language Requirement: In 2016 the University of Auckland introduced an Academic English Language Requirement into all its bachelor's degree programmes. This requirement is to ensure that all students have a sufficient level of competence in academic English to support their study at the University of Auckland. Students going to the University of Auckland must have gained the University Entrance Literacy Standard and a minimum of 17 credits in NCEA English at Level 2 and/or 3. This is not intended to exclude students from the University. If a student does not meet the 17 credits they must complete an additional approved course in academic English during the first year of university study.

<https://www.auckland.ac.nz/en/students/academic-information/aclr.html>

AUCKLAND UNIVERSITY OF TECHNOLOGY (AUT)

AUT also have Rank Scores for guaranteed entry into some of their courses as well as some courses having specific subject requirements at Level 3 NCEA. You can find more information [here](#).

UNIVERSITY ENTRANCE LITERACY – LEVEL 2

Below are the Level 2 Assessment Standards that contribute to University Entrance Literacy Requirements and are offered in courses at BDSC. To access the latest full list of applicable Level 2 and Level 3 standards follow the link – [University Entrance Literacy List, 22 June 2023](#)

KEY: INT=Internally assessed standard, EXT- Externally assessed standard. ✓ meets Reading and/or Writing of the UE Literacy requirement.

BDSC Course	ID	Subject reference	Credits	Int/Ext	Reading	Writing
L2 Art History	91180	Art History 2.1	4	EXT		✓
	91182	Art History 2.3	4	EXT		✓
	91184	Art History 2.5	4	INT	✓	
L2 Biology	91156	Biology 2.4	4	EXT		✓
	91157	Biology 2.5	4	EXT		✓
L2 Classical Studies	91200	Classical Studies 2.1	4	EXT	✓	✓
	91202	Classical Studies 2.3	4	INT	✓	
	91203	Classical Studies 2.4	6	EXT	✓	✓
	91204	Classical Studies 2.5	6	INT	✓	
L2 Drama	91213	Drama 2.1	4	INT	✓	
	91215	Drama 2.3	4	EXT	✓	
	91216	Drama 2.4	4	INT	✓	
	91217	Drama 2.5	4	INT	✓	
	91218	Drama 2.6	5	INT	✓	
	91220	Drama 2.8	4	INT		✓
	91221	Drama 2.9	4	INT	✓	
L2 Economics	91227	Economics 2.6	6	INT	✓	
	91228	Economics 2.7	4	INT	✓	
L2 English	91098	English 2.1	4	EXT	✓	✓
	91100	English 2.3	4	EXT	✓	✓
	91101	English 2.4	6	INT		✓
	91105	English 2.8	4	INT	✓	
L2 Geography	91240	Geography 2.1	4	EXT	✓	
	91242	Geography 2.3	4	EXT	✓	
L2 History	91229	History 2.1	4	INT	✓	
	91230	History 2.2	5	INT	✓	
	91231	History 2.3	4	EXT	✓	✓
	91232	History 2.4	5	INT	✓	
	91233	History 2.5	5	EXT	✓	✓
	91234	History 2.6	5	EXT	✓	✓
L2 Media Studies	91251	Media Studies 2.4	4	EXT		✓
L2 Music	91277	Music Studies 2.7	6	EXT		✓
L2 Psychology	91844	Psychology 2.1	6	INT	✓	
	91845	Psychology 2.2	3	INT	✓	
	91846	Psychology 2.3	4	INT	✓	
	91847	Psychology 2.4	5	INT	✓	
	91848	Psychology 2.5	3	INT	✓	
L2 Te Reo Māori	91287	Te Reo Māori 2.4	6	EXT		✓
	91288	Te Reo Māori 2.5	6	INT		✓

UNIVERSITY ENTRANCE LITERACY – LEVEL 3

Below are the Level 3 Assessment Standards that contribute to University Entrance Literacy Requirements and are offered at BDSC.

KEY: INT=Internally assessed standard, EXT- Externally assessed standard. ✓ meets Reading and/or Writing of the UE Literacy requirement.

BDSC Course	ID	Subject reference	Credits	Int/Ext	Reading	Writing
L3 Accounting	91407	Accounting 3.4	5	INT	✓	✓
L3 Art History	91482	Art History 3.1	4	EXT	✓	✓
	91483	Art History 3.2	4	EXT	✓	
	91484	Art History 3.3	4	EXT	✓	✓
	91485	Art History 3.4	4	INT	✓	
	91486	Art History 3.5	4	INT	✓	
	91487	Art History 3.6	4	INT	✓	
L3 Biology	91602	Biology 3.2	3	INT	✓	
	91603	Biology 3.3	5	EXT	✓	✓
	91604	Biology 3.4	3	INT	✓	
	91605	Biology 3.5	4	EXT	✓	✓
	91606	Biology 3.6	4	EXT	✓	✓
L3 Business Studies	91379	Business Studies 3.1	4	EXT	✓	✓
	91381	Business Studies 3.3	4	EXT	✓	✓
	91383	Business Studies 3.5	3	INT	✓	
	91383	Business Studies 3.10	4	INT	✓	
L3 Classical Studies	91394	Classical Studies 3.1	4	EXT	✓	✓
	91396	Classical Studies 3.3	6	EXT	✓	✓
	91397	Classical Studies 3.4	6	INT	✓	
	91398	Classical Studies 3.5	6	INT	✓	
L3 Dance	91594	Dance 3.7	4	EXT		✓
L3 Digital Technologies	91909	Digital Technologies 3.9	3	EXT		✓
L3 Drama	91512	Drama 3.1	4	INT	✓	
	91514	Drama 3.3	4	EXT	✓	✓
	91515	Drama 3.4	4	INT	✓	
	91516	Drama 3.5	4	INT	✓	
	91517	Drama 3.6	5	INT	✓	
	91518	Drama 3.7	4	EXT		✓
	91519	Drama 3.8	5	INT		✓
	91520	Drama 3.9	5	INT	✓	
L3 Economics	91400	Economics 3.2	4	EXT	✓	✓
	91401	Economics 3.3	5	INT	✓	
	91402	Economics 3.4	5	INT	✓	
	91403	Economics 3.5	6	EXT	✓	✓
L3 English	91472	English 3.1	4	EXT	✓	✓
	91473	English 3.2	4	EXT		✓
	91474	English 3.3	4	EXT	✓	✓
	91475	English 3.4	6	INT		✓
	91479	English 3.8	4	INT	✓	
L3 English for Academic Purposes	22750	English for Academic Purposes	6	INT	✓	✓
	22751	English for Academic Purposes	6	INT	✓	
L3 Geography	91426	Geography 3.1	4	EXT	✓	✓
	91427	Geography 3.2	4	EXT	✓	✓
	91428	Geography 3.3	3	INT	✓	
	91429	Geography 3.4	4	EXT	✓	✓
	91431	Geography 3.6	3	INT	✓	
	91432	Geography 3.7	3	INT	✓	

L3 Health Education	91461	Health 3.1	5	INT	✓	
	91462	Health 3.2	5	EXT	✓	✓
	91463	Health 3.3	5	INT	✓	
	91464	Health 3.4	4	INT	✓	
L3 History	91434	History 3.1	5	INT	✓	
	91435	History 3.2	5	INT	✓	
	91436	History 3.3	4	EXT	✓	✓
	91437	History 3.4	5	INT	✓	
	91438	History 3.5	6	EXT	✓	✓
L3 Statistics	91584	Mathematics and Statistics 3.12	4	EXT	✓	✓
L3 Media Studies	91493	Media Studies 3.4	4	EXT	✓	✓
L3 Music Studies	91423	Music Studies 3.8	4	INT	✓	✓
	91425	Music Studies 3.10	6	EXT	✓	
L3 Physical Education	91502	Physical Education 3.5	4	INT	✓	
L3 Psychology	91872	Psychology 3.1	6	INT	✓	
	91873	Psychology 3.2	3	INT	✓	
	91874	Psychology 3.3	6	INT	✓	
	91875	Psychology 3.4	4	INT	✓	
	91876	Psychology 3.5	3	EXT	✓	✓
L3 Te Reo Māori	91652	Te Reo Māori 3.3	6	EXT	✓	
	91653	Te Reo Māori 3.4	6	EXT		✓
	91654	Te Reo Māori 3.5	6	INT		✓
L3 Technology	91617	Technology 3.10	4	EXT	✓	✓

NCEA LEVEL 3 APPROVED SUBJECT LIST [\(Level 3 UE Approved Subject List\)](#)

Below is a list of Level 3 courses offered at BDSC that are approved for university entrance. For university entry, students must gain at least 14 credits in a minimum of 3 university approved subjects. If you are planning to go to university, we recommend ensuring all five L3 subjects you select are university approved. For students going into Year 12, with aspirations for university, you should check that your L2 subjects pathway into a university approved course at L3.

UNIVERSITY APPROVED COURSES AT BDSC	
Accounting	Geography
Art History	Health Education
Art – Design	History
Art – Painting	Japanese
Art – Photography	Mathematics
Biology	Mathematics – Calculus
Business Studies	Mathematics – Statistics
Chemistry	Media Studies
Chinese	Music Studies
Classical Studies	Outdoor Education
Dance	Physical Education
Design & Visual Communication (DVC)	Physics
Digital Technologies	Psychology
Drama	Technology – Fashion Design
Economics	Technology – Food
English	Technology – Multi-Materials
French	Te Reo Māori

UNIVERSITY ENTRANCE INFORMATION

Here is a guide to what Universities may be looking for. This will require you to think about the future to make sure you choose Level 1, 2 and 3 options that will lead you onto the correct options in future years.

ENGINEERING

University of Auckland—Level 3 NCEA course must include MAC and PHY. A much higher level than the minimum University entry is required, and the Engineering School also expects to specify higher literacy standard requirements than the minimum. University of Canterbury—Level 3 NCEA must include MAC PHY (and for some specialisations) CHE.

LAW

Most universities have not stipulated any prerequisites, but a high standard of written and spoken English is important so some Level 3 NCEA subjects such as English and language rich subjects are recommended. Law is competitive entry into the second year at most universities. There is direct entry at Waikato.

MEDICINE / PHARMACY / OPTOMETRY / DENTISTRY / MEDICAL IMAGING (UoA and Otago)

University of Auckland—students will be required to enrol in either a Bachelor Biomedical Science, a Bachelor of Health Sciences or a Bachelor of Science (Health Pathway) for their first year of study. Students will then be selected for the professional programmes for their second year. Entry is highly competitive and is based on academic results, mini-medical interviews and for Medicine - the Casper test. UoA highly recommend Level 3 BIO, CHE, SAP or MAC and an English Rich subject. NB: UoA does not have a pathway to Dentistry. PHY is recommended for students wanting to get into Medical Imaging and Optometry.

University of Otago—Students must enrol in Health Science in their first year (HSFY). Students will then be selected for the professional programmes for their second year. Entry is highly competitive and is based on academic results, mini-medical interviews and for Medicine - the UCAT. Otago recommend Level 3 CHE, PHY, MAC and an English Rich subject. Applicants will also be required to pass the HSFY English diagnostic test or have passed English 126. NB: Otago does not have a pathway to Medical Imaging.

NURSING

UE is required including credits in a Science subject to at least Level 2 for MIT. University of Auckland requires a higher level than the minimum university entry, including a minimum of 18 credits in one of English, Geography, History, Classical Studies, History of Art or Te Reo Māori and 18 credits in either Biology or Physics or Chemistry. AUT also recommend a Science and a language rich subject at Level 3.

PHYSIOTHERAPY

University of Otago—the same requirements as Medicine.

AUT—Physiotherapy is competitive entry. Recommended subjects include BIO / CHE / PED / PSY / CLS / DRA / ENG / GEO / HED / HIS / MED / SAP. To be competitive you should have a Rank Score of 250.

VETERINARY SCIENCE

Massey University—A very good understanding of science is required so a Level 3 course including CHE and BIO are recommended. PHY and MAT to at least Level 2 is also recommended. Strong written and oral English skills are also important. There is open entry to enrol in Semester 1, but selection into the Professional Phase in Semester 2 is highly competitive.

BUSINESS and COMMERCE

There are no specific subjects required for entry but SAP / MAC or MAT at Level 3 is recommended. Useful subjects include ACC BUS ECO and English-Rich subjects.

ARCHITECTURE

There are no specific subjects, but it is recommended that you have subjects like DVC / DIT / TEM / ART / DES / PHY / ENG / MAT. You are most likely to have to submit a portfolio of your work and a written statement. English rich subjects are also useful.

EDUCATION and TEACHING

By selection only which usually involves an Interview, Police check and referees' reports. Applicants must be capable of meeting the Requirements of the New Zealand Teachers Council, including language proficiency. Literacy and Numeracy tests. Recommended subjects Languages / CLS / ECO / ENG / GEO / HIS / MAT / SCI / Technology / Creative Arts.

NB: If you want to teach secondary school then you first complete an undergraduate degree in the subject you would like to teach and then do a one year post-graduate diploma in Teaching.

PERFORMING ARTS - DANCE or MUSIC

These degrees will more likely than not require an online or in-person individual or group audition / interview. There are no specific subjects required for entry but participation in the creative arts is naturally required.

COMPUTER SCIENCE

Calculus and an English Rich Subject are recommended. As is Digital Technology. Physics and statistics are also useful subjects for this pathway.

Applicants for some limited entry qualifications may be required to have taken certain subjects and achieved a specific number of credits in those subjects (refer to table below as a general guide). **All students must be very clear on what the entry requirements are for the specific course they wish to pursue at University or an Institute of Technology. Entry to these courses depends on the prerequisites being met.**

The rank score for entry to university will be based on a student's best 80 credits at Level 3 or higher over a maximum of 5 approved subjects. The credits are weighted by awarding four points for Excellence, three points for Merit and two points for Achieved for up to 24 credits in each approved subject. The maximum available score is 320. This system is used by all New Zealand universities but for the University of Auckland it is the basis of the Guaranteed Entry Score (GES).

The information below outlines specific entry prerequisites for a range of courses at **University of Auckland**.

AUCKLAND UNIVERSITY – 2027 PROGRAMME, RANK SCORE, SUBJECT AND CREDIT REQUIREMENTS

Programme	Rank Score
Bachelor of Architectural Studies (BAS) <ul style="list-style-type: none"> Subject to the qualitative evaluation of a portfolio of creative work and written statement. 	230
Bachelor of Arts (BA)	150
Bachelor of Biomedical Science (BBiomedSc)	200
Bachelor of Commerce (BCom)	200
Bachelor of Communication (BC)	165
Bachelor of Dance Studies (BDanceSt) <ul style="list-style-type: none"> Subject to the qualitative evaluation of a group audition, C.V. and written statement. 	150
Bachelor of Design	180
Bachelor of Early Childhood Studies (BECSt)	150
Bachelor of Education – TESOL (BEEd(TESOL))	150
Bachelor of Education (Teaching) (BEEd (Tchg)) <ul style="list-style-type: none"> Subject to a satisfactory interview, police check, and referees' reports. (You may also be required to sit literacy, numeracy and IELTS assessments.) 	150
Bachelor of Engineering (Honours) (BE(Hons)) <ul style="list-style-type: none"> With 17 external Level 3 credits in Calculus and 16 external Level 3 credits in Physics. 	250
Bachelor of Fine Arts (BFA)	150
Bachelor of Global Studies (BGlobalSt) <ul style="list-style-type: none"> With a minimum of 16 credits each from three approved subjects. Study of an additional language is encouraged. 	210
Bachelor of Health Sciences (BHSc)	200
Bachelor of Laws (LLB (Part I)) <ul style="list-style-type: none"> Students must apply for a conjoint or concurrent degrees and satisfy the conjoint score for the other Bachelor degree. 	
Bachelor of Music (BMus) <ul style="list-style-type: none"> Entry to Creative Practice: Performance or Jazz Music is subject to the qualitative evaluation of an audition portfolio. 	150
Bachelor of Nursing (BNurs) <ul style="list-style-type: none"> With a minimum of 18 credits in one of English, Geography, History, Classical Studies, History of Art or Te Reo Māori and a minimum of 18 credits in one of Biology, Chemistry, Physics. 	230
Bachelor of Property (BProp)	200
Bachelor of Psychology (BPsych)	165
Bachelor of Science (BSc) <ul style="list-style-type: none"> Health Majors (Cellular and Molecular Bioscience, Exercise Science, Medicinal Chemistry, Nutrition, Pharmacology, Physiology) All other majors/specialisations 	200 165
Bachelor of Sport, Health and Physical Education (BSportHPE)	150
Bachelor of Urban Planning (Honours) (BUrbPlan (Hons))	180

NB: The entry prerequisites listed above are taken from the [University of Auckland](https://www.auckland.ac.nz)

It is important that you regularly check updated entry requirements for all university courses in New Zealand.

Students for whom English is not their first language may also be required to demonstrate their proficiency in English.

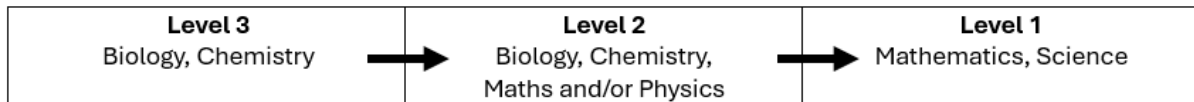
RECOMMENDED SUBJECTS

The Universities have lists of required and recommended subjects in Level 3 for many of their degree programmes. This [link](#) will take you to this information. Do some research and then work backwards.

e.g. **Bachelor of Veterinary Science (Massey University)**

Would look like:

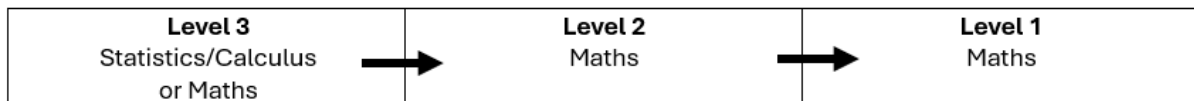
Biology Chemistry At least 14 credits	Strongly recommended
Physics and/or Mathematics At least 14 credits in NCEA Level 2	Strongly recommended



e.g. **Bachelor of Commerce or Bachelor of Property (UoA)**

Bachelor of Commerce (BCom) Bachelor of Property (BProp)	Students will be selected on the basis of their rank score. There are no specific subjects for admission. However Statistics and/or Calculus, or Mathematics, are recommended. Any of the following subjects are also beneficial: Accounting, Economics, English, Chemistry, Physics, Biology, History, Geography, Business Studies.
---	--

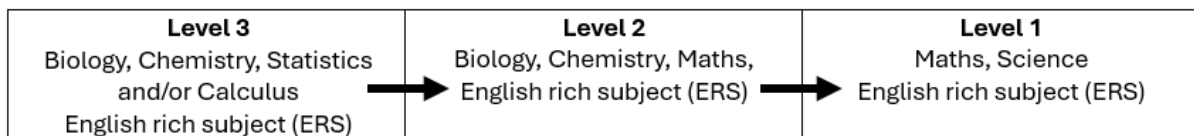
Would look like:



e.g. **Bachelor of Biomedical Science / Health Science / Science (Health Pathways) - pathways to Medicine, Optometry, Medical Imaging and Pharmacy (UoA)**

Would look like:

Bachelor of Biomedical Science (NEW)	200 No entry reqs anymore, however if wanting clinical pathway highly recommend Bio, Chem, stats and/or calc and an English rich
--------------------------------------	---

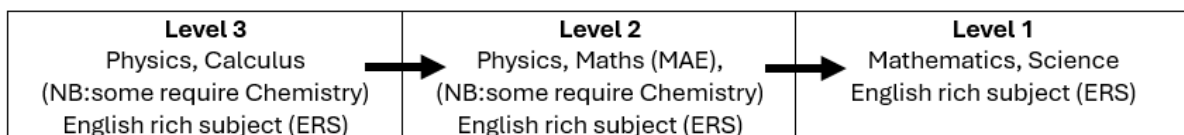


e.g. **Bachelor of Laws (UoA)**

Bachelor of Laws (LLB (Part I))	There are no specific subjects required for admission. Any of the following are recommended: Classical Studies, Economics, English, Geography, History, History of Art, Languages, Te Reo Māori, Te Reo Rangatira. A good standard of oral and written English is important.
---------------------------------	--

e.g. **Bachelor of Engineering – at any University**

Would look like:



NB: English rich subjects (ERS) at BDSC are Classics, English, Geography and History

BDSC COURSE CODES

CODE	COURSE	9	10	Level 1	Level 2	Level 3	Learning Area
ACC	Accounting				L2	L3	SOS
ANC	Ancient Civilizations		10				SOS
ART	Art - Practical	9	10	L1	L2	L3	VPA
AWB	Active Well Being			L1			HPE
BSS	Building Skills				L2		TEC
BIO	Biology				L2	L3	SCI
BUP	Business Pathways		10				SOS
BUS	Business Studies				L2	L3	SOS
CBA	Commerce – Business / Accounting			L1			SOS
CBE	Commerce – Business / Economics			L1			SOS
CHE	Chemistry				L2	L3	SCI
CHI	Chinese	9	10	L1	L2	L3	LAN
CLS	Classical Studies				L2	L3	SOS
DAN	Dance	9	10	L1	L2	L3	VPA
DES	Art - Design				L2	L3	VPA
DIP	Digital Technologies with Programming				L2	L3	TEC
DIT	Digital Technologies	9	10	L1			TEC
DRA	Drama	9	10	L1	L2	L3	VPA
DRT	Digital Art		10	L1			VPA
DVC	Design and Visual Communication	9	10	L1	L2	L3	TEC
EAC	English as Additional Language - Academic Course	9	10	L1	L2	L3	ENG
ECE	Early Childhood Education				L2	L3	HPE
ECO	Economics				L2	L3	SOS
ELC	English as Additional Language - Language Course	9	10	L1	L2	L3	ENG
ENA	English - Alternative	9	10	L1	L2		ENG
ENB	English - Booster course for L3					L3	ENG
ENE	English - Extension				L2	L3	ENG
ENG	English	9	10	L1	L2	L3	ENG
ENL	English - Literacy			L1	L2	L3	ENG
ESS	Engineering Skills				L2		TEC
FAH	Food and Hospitality			L1	L2	L3	TEC
FDN	Fashion and Design Technology		10	L1	L2	L3	TEC
FIN	Financial Studies				L2	L3	SOS
FPW	Future Pathways				L2	L3	VGC
FRE	French	9	10	L1	L2	L3	LAN
GEO	Geography			L1	L2	L3	SOS
HED	Health Education	9	10	L1	L2	L3	HPE
HIS	History			L1	L2	L3	SOS
IGO	Investigative Geography		10				SOS
JAP	Japanese	9	10	L1	L2	L3	LAN
MAA	Mathematics and Statistics - Alternative			L1	L2		MAT
MAC	Mathematics with Calculus					L3	MAT
MAE	Mathematics and Statistics - Extended	9			L2		MAT
MAF	Mathematics and Statistics - Foundation			L1			MAT
MAO	Te Reo Māori	9	10	L1	L2	L3	LAN
MAT	Mathematics	9	10	L1	L2	L3	MAT
MAX	Mathematics and Statistics - Accelerated		10	L1	L2		MAT
MED	Media Studies		10	L1	L2	L3	ENG
MNC	Maths – Numeracy Co-requisite				L2		MAT
MNU	Maths Numeracy		10				MAT
MTY	Materials Technology	9					TEC
MUP	Music Practical					L3	VPA
MUS	Music Studies	9	10	L1	L2	L3	VPA

CODE	COURSE	9	10	Level 1	Level 2	Level 3	Learning Area
OED	Outdoor Education		10	L1	L2	L3	HPE
PEC	Core Physical Education	9	10				HPE
PED	Physical Education		10	L1	L2	L3	HPE
PHO	Photography				L2	L3	VPA
PHY	Physics				L2	L3	SCI
PSY	Psychology				L2	L3	SOS
SAP	Statistics and Probability					L3	MAT
SCI	Science	9	10				SCI
SCB	Science – Biology / Chemistry			L1			SCI
SCP	Science – Physics / Earth & Space Science			L1			SCI
SCX	Science - Accelerated		10				SCI
SOS	Social Studies	9	10				SOS
SPA	Statistics and Probability - Alternative					L3	MAT
SPS	Sports Studies				L2	L3	HPE
TEF	Food Technology	9	10	L1	L2	L3	TEC
TEM	Multi Materials Technology		10	L1	L2	L3	TEC
TSM	Travel and Tourism				L2	L3	SOS
TSS	Trades Skills			L1			TEC
WCS	Work and Community Studies			L1	L2		VGC

Not all courses offered will run. Course availability will depend on the number of students selecting the course, the availability of staffing and the availability of specialist rooming.

Select courses carefully as it may be difficult to change courses later.

If you have any queries about the option selection process that can't be dealt with by your tutor, mentor, or Whānau Leader, you should see Ms Pinnell. k.pinnell@bdsc.school.nz

Remember...make a **planned choice** of your subjects.

Consider all the information carefully. Go to the bdsc.careerwise.school website. It has a vast amount of information on careers, university courses, and tertiary training institutions' admission requirements. Look at the different subject pathways in the option book and plan how you will get to your desired Level 2 or Level 3 destination. Read the subject descriptors and prerequisites and know exactly what requirements you will have to meet to enter any course.

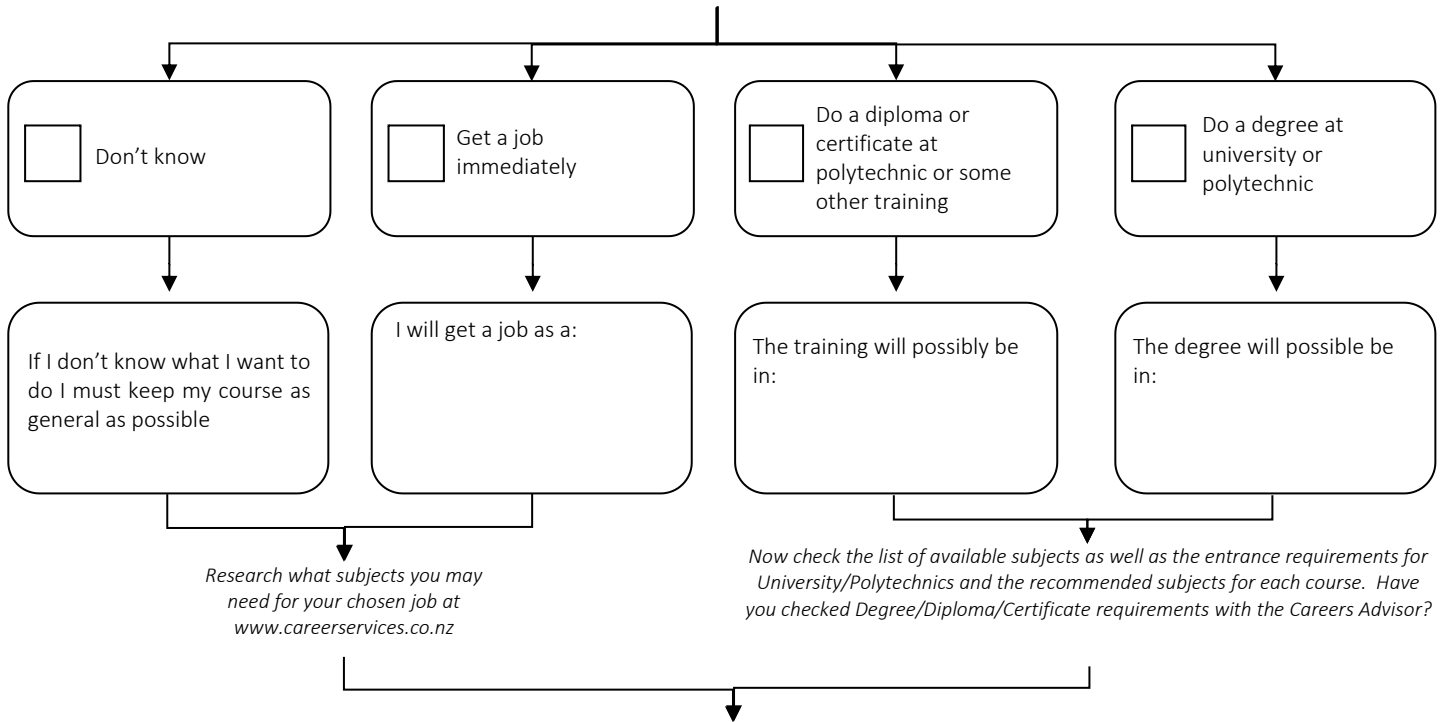
Carefully consider the following factors before deciding on your final option selection.

- Ability – what can you realistically achieve? What subjects are you good at?
- Interest – what do you enjoy learning?
- Qualification – what grades do you need? What endorsement would you like to achieve?
- Career pathway – what qualifications do you need? What subjects do you need?
- Prerequisites – what are the prerequisites for your chosen subjects? Do you meet the requirements?
- Preferred learning style – does this subject cater to your learning needs?
- Preferred assessment mode – will this help you to achieve your best results?
- Breadth & Variety – is there variety in your overall programme, and does it leave you with options?
- Flexibility – can you go in a different direction if your initial plan doesn't work out?

PLANNING PAGE

Over the next few weeks, you must fill in this chart, in consultation with your parents, teachers, Heads of Learning and the Careers Advisor. The more information you gather about your career options the more informed your final decisions will be:

When I leave school, I hope to..... (Choose one path)



WORKING BACKWARDS

YEAR 13

For this plan to work I will need to take the following subjects in **NCEA Level 3**:

- 1 _____
- 2 _____
- 3 _____
- 4 _____
- 5 _____

YEAR 12

So, I will need to take the following subjects in **NCEA Level 2**:

- 1 **ENGLISH**
- 2 _____
- 3 _____
- 4 _____
- 5 _____
- 6 _____

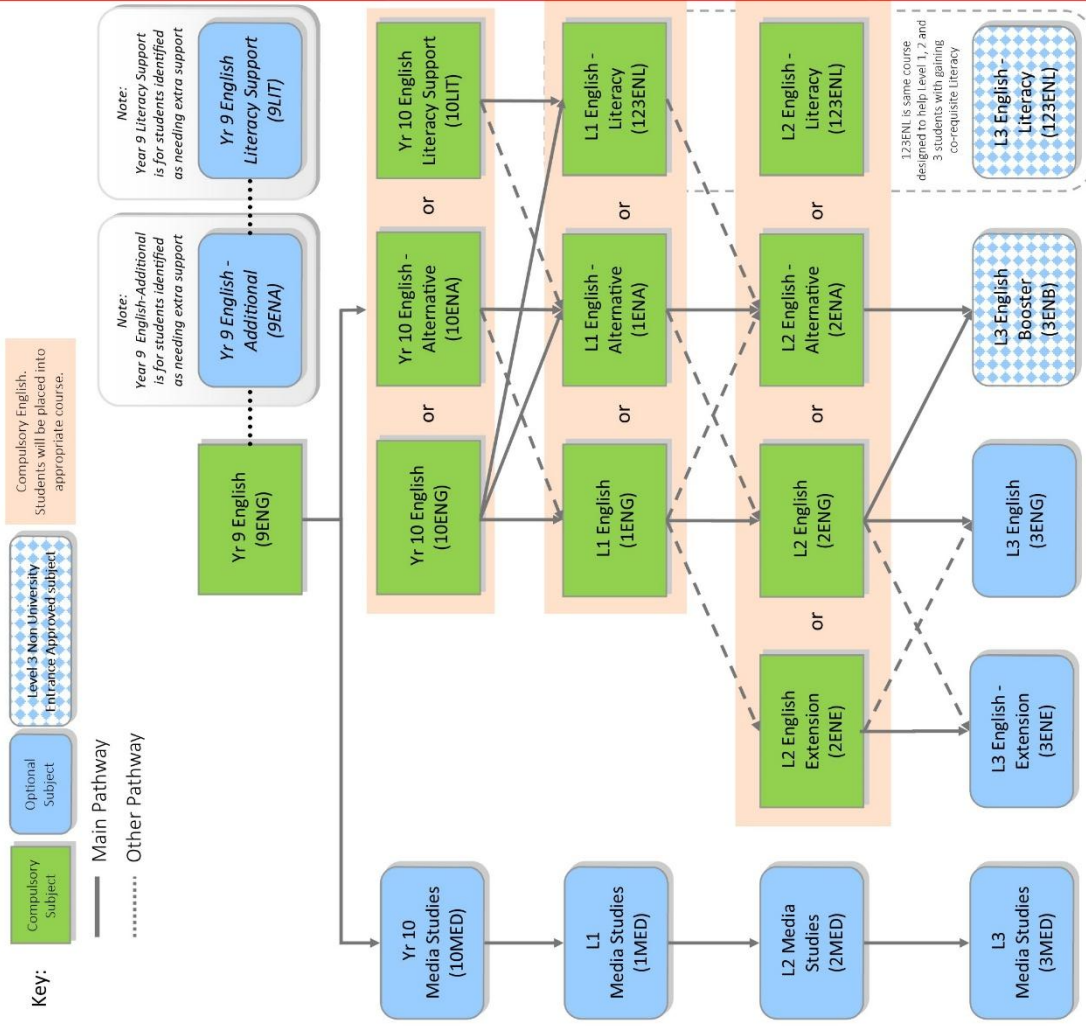
YEAR 11

And I will need to take the following subjects in **NCEA Level 1**:

- 1 **ENGLISH**
- 2 **MATHEMATICS**
- 3 **SCIENCES (SCB or SCP or SCL)**
- 4 _____
- 5 _____
- 6 _____

ENGLISH LEARNING AREA FLOWCHART

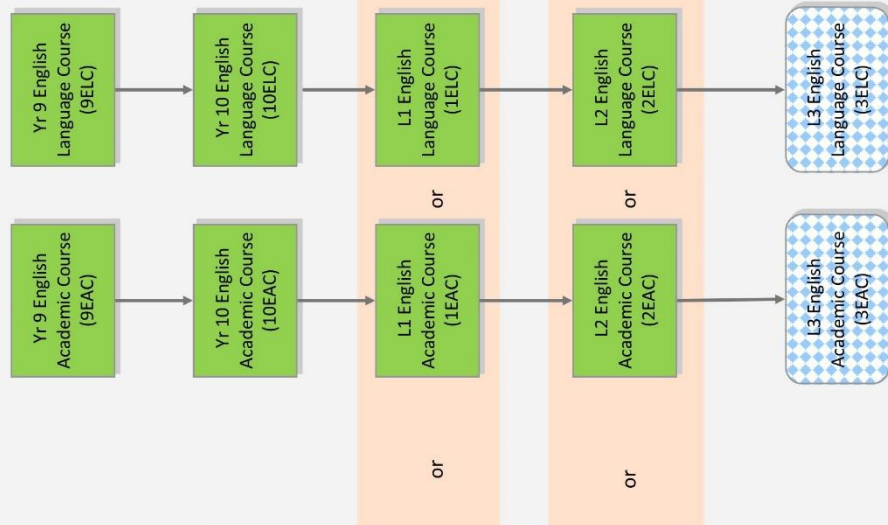
ENGLISH FLOWCHART 2027



ENGLISH AS ADDITIONAL LANGUAGE (EAL) FLOWCHART 2027

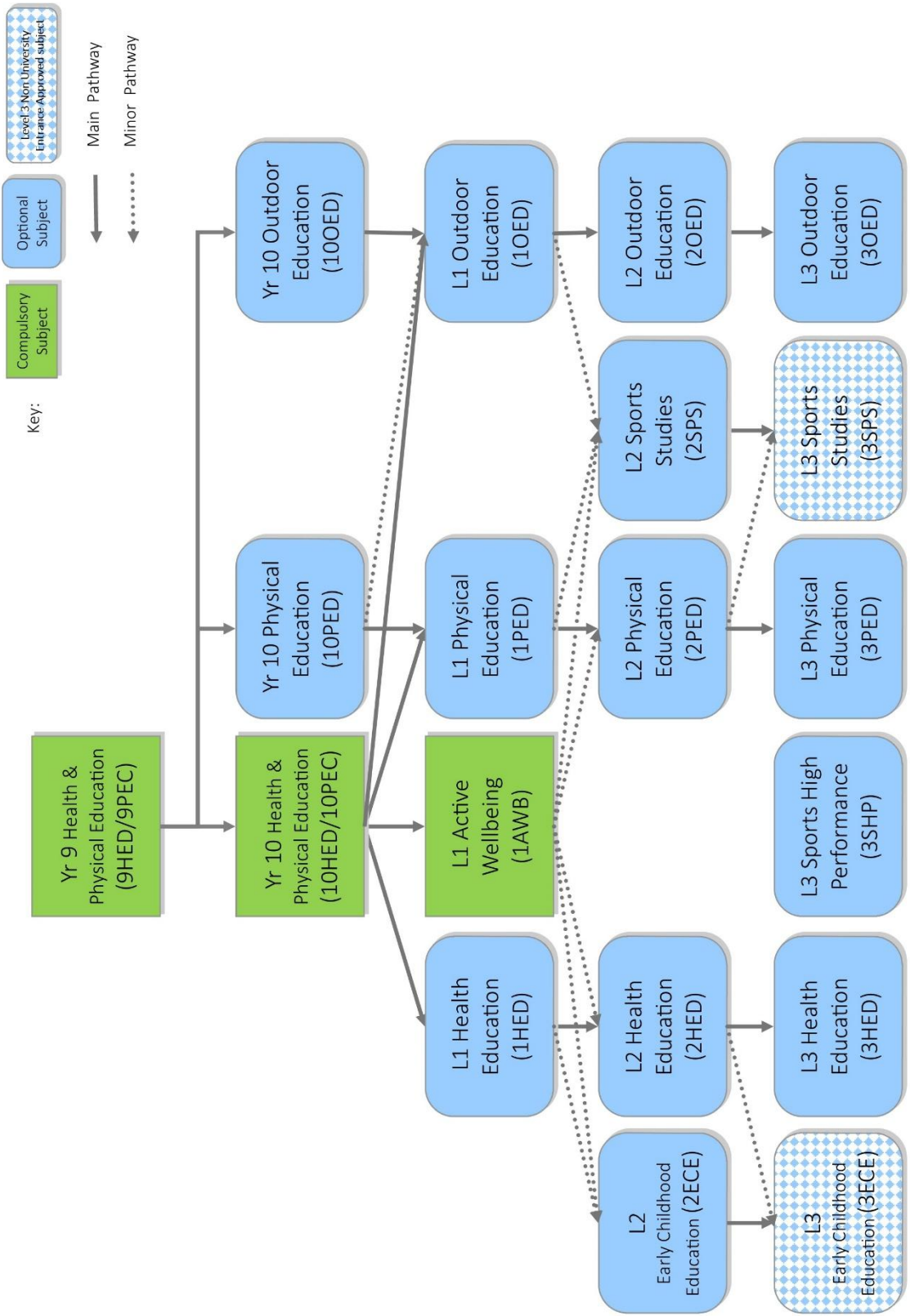
At Year 9/10, identified students may be removed from a Year 9 or a Year 10 option line to attend the English Language Course (ELC). Students in 9/10 EAC will attend 9/10 ENG as well.

At Year 11/12/13 identified students may be placed in EAC or ELC instead of English, as recommended by Head of EAL. Students are placed in EAC and ELC depending on their English Language Progression Stages.



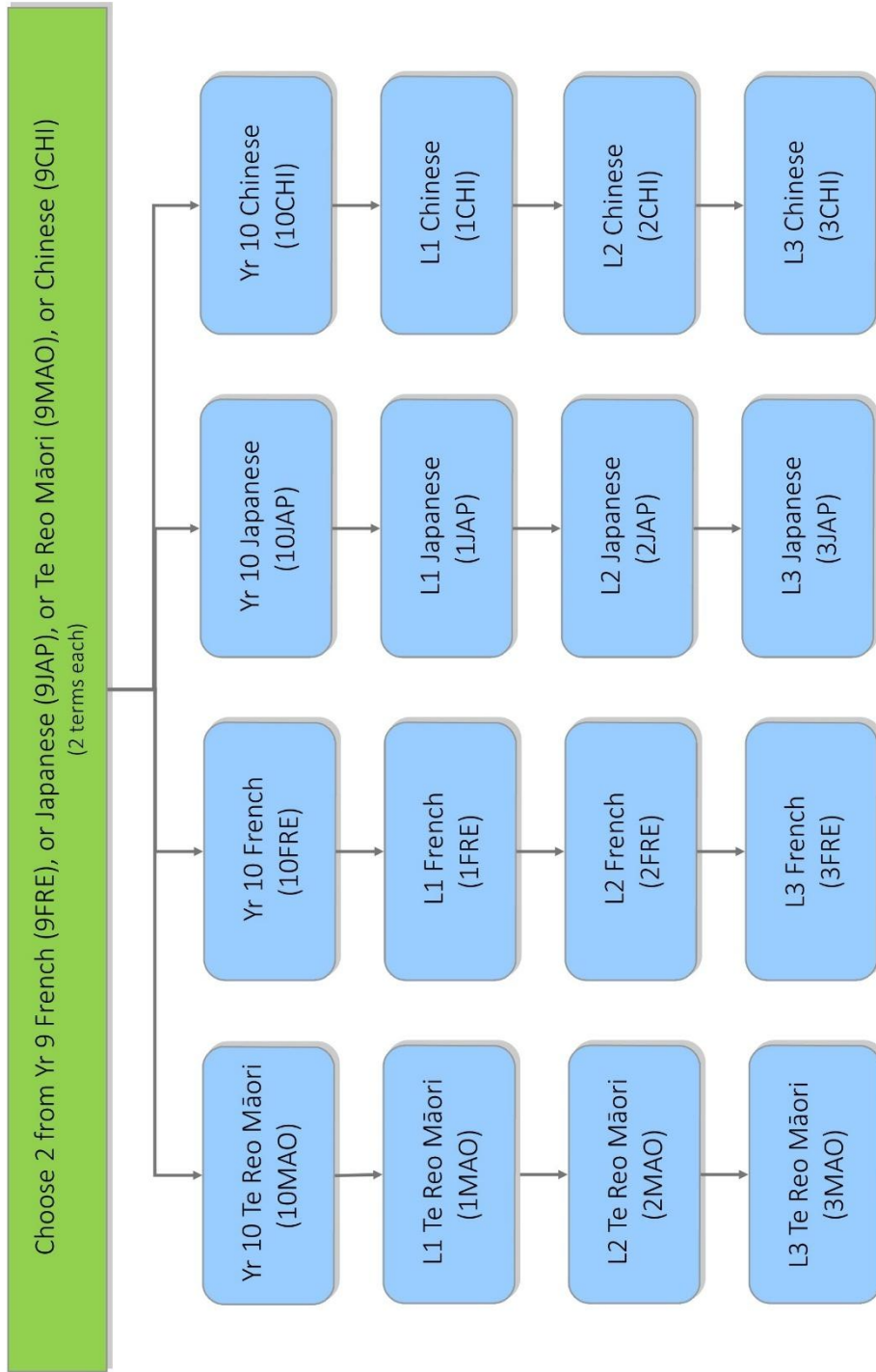
H&PE LEARNING AREA FLOWCHART

HEALTH & PHYSICAL EDUCATION FLOWCHART 2027



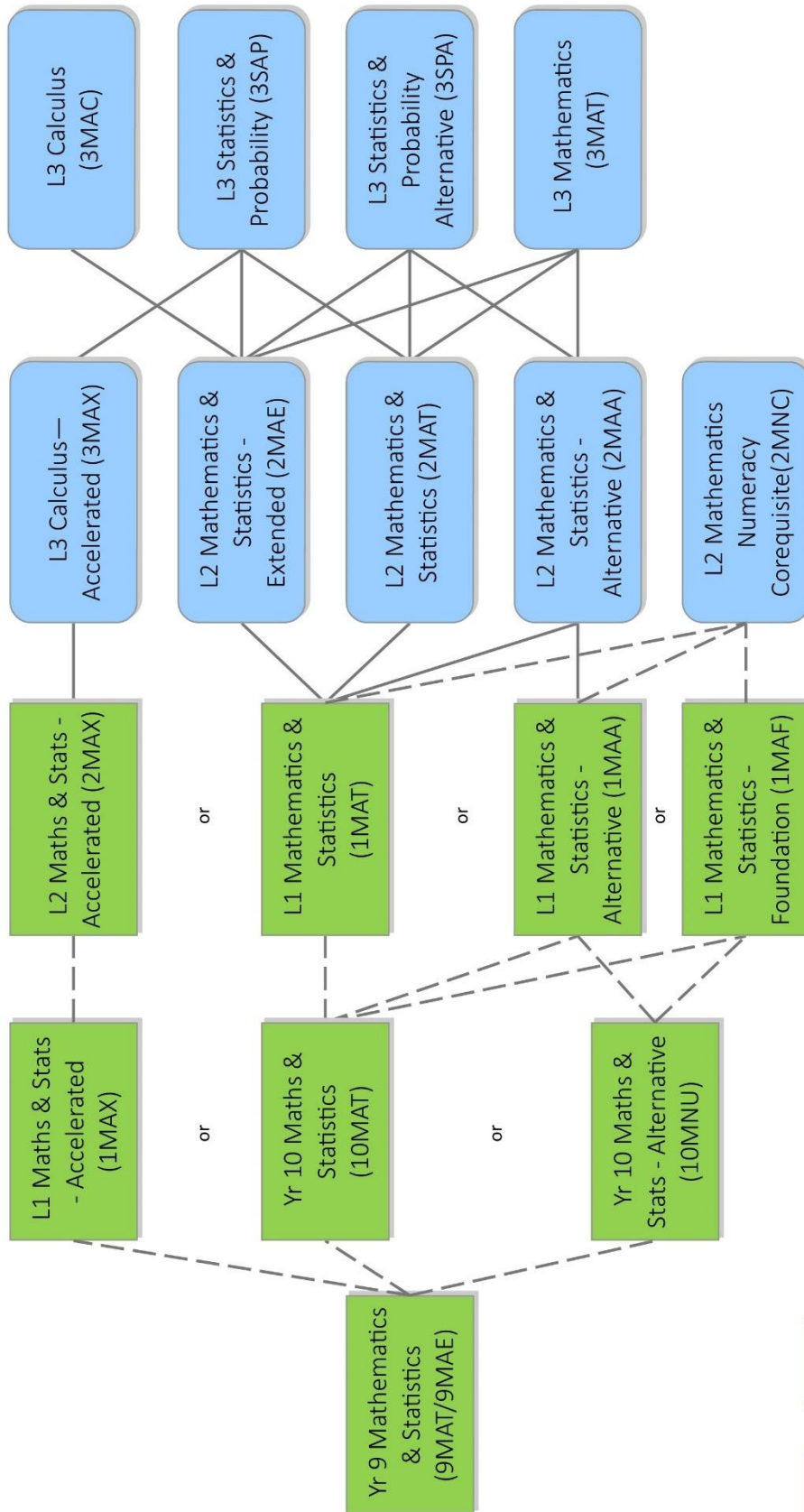
LANGUAGES LEARNING AREA FLOWCHART

LANGUAGES FLOWCHART 2027



MATHEMATICS LEARNING AREA FLOWCHART

MATHEMATICS AND STATISTICS FLOWCHART 2027



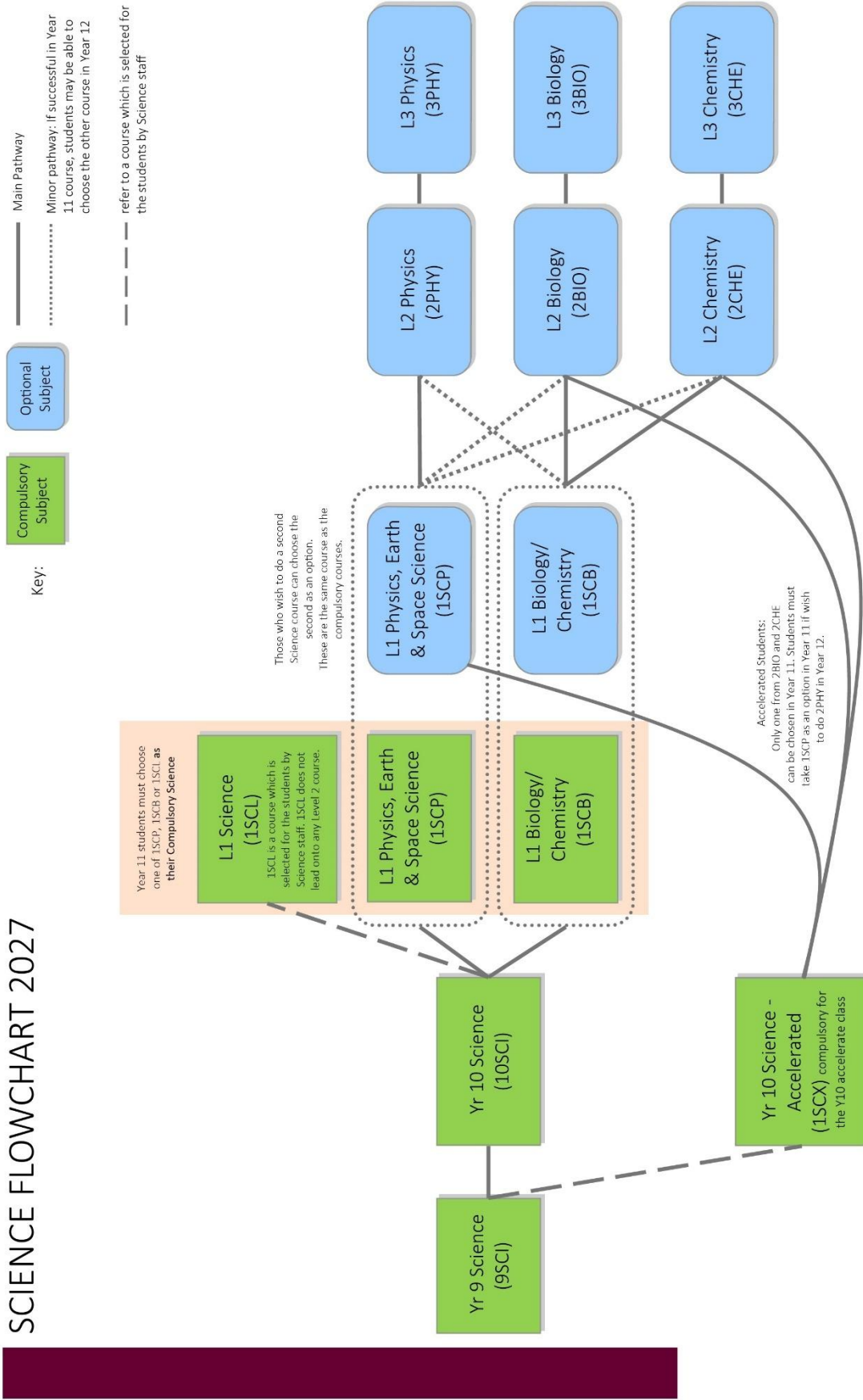
Key:

- Compuls
- Optional Subject

Key: Dashed lines refer to courses which are selected for the students by Mathematics staff

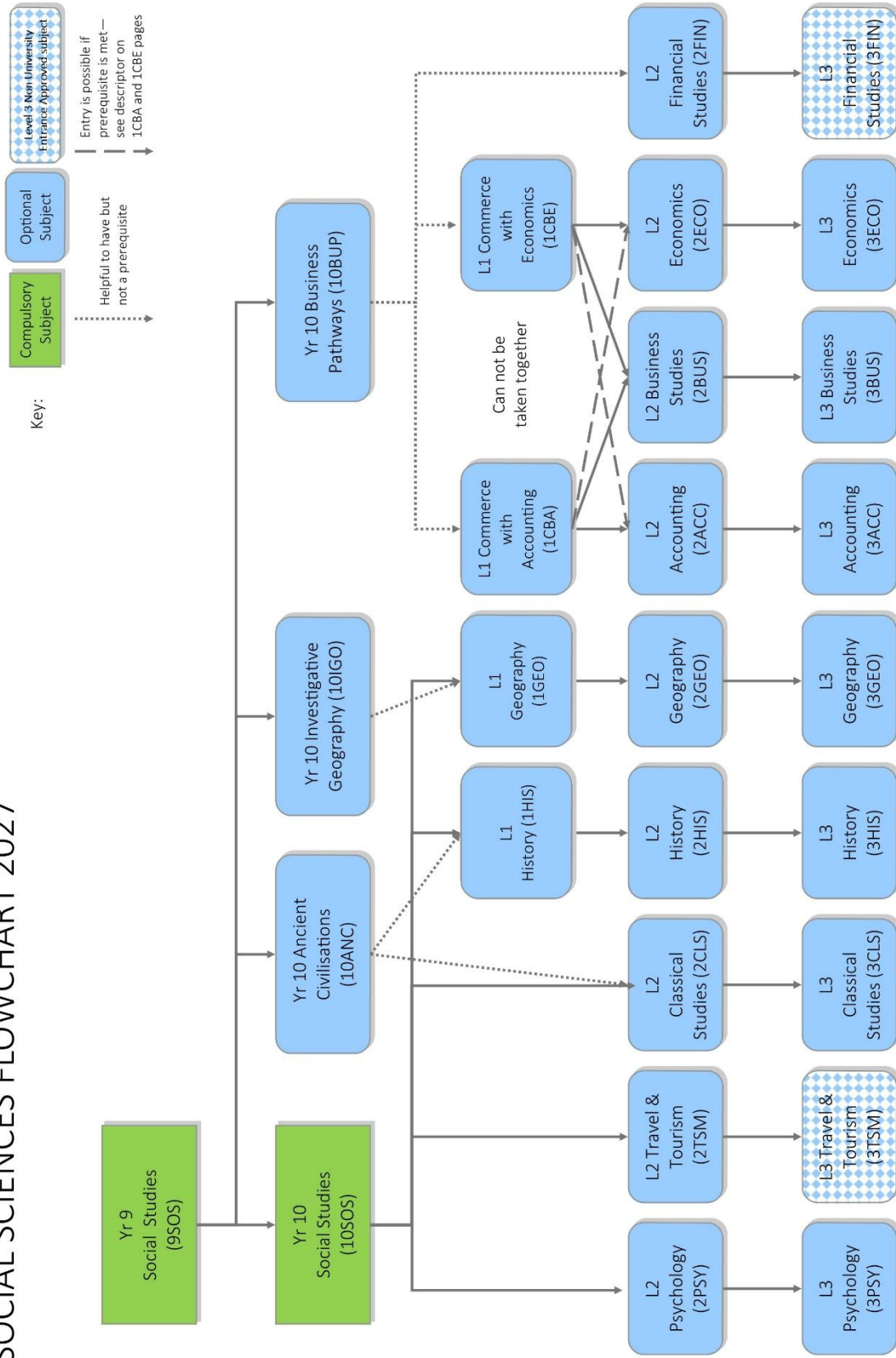
SCIENCE LEARNING AREA FLOWCHART

SCIENCE FLOWCHART 2027



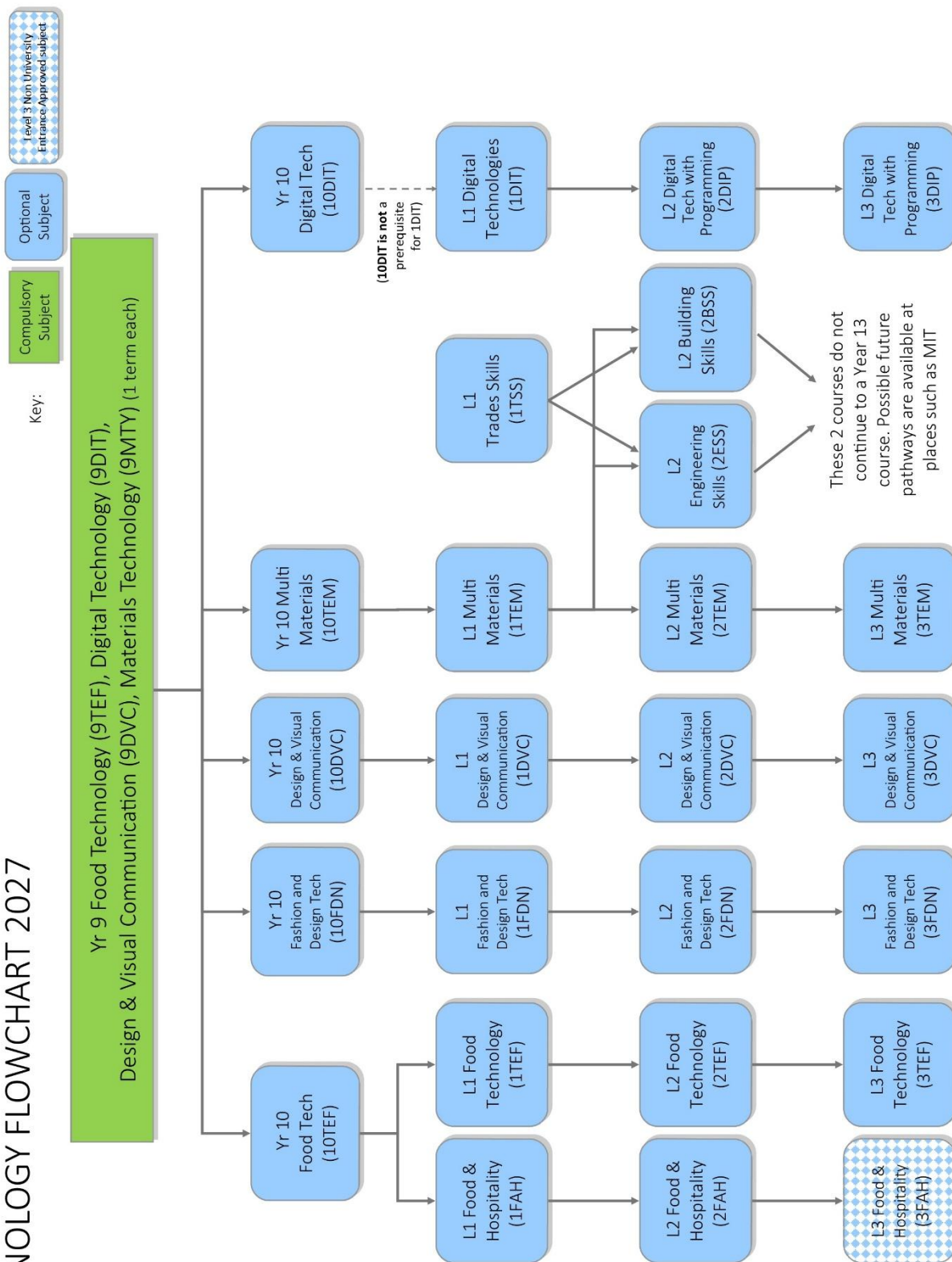
SOCIAL SCIENCES LEARNING AREA FLOWCHART

SOCIAL SCIENCES FLOWCHART 2027



TECHNOLOGY LEARNING AREA FLOWCHART

TECHNOLOGY FLOWCHART 2027



VPA LEARNING AREA FLOWCHART

VISUAL AND PERFORMING ARTS FLOWCHART 2027

